



SPECTRUM

A DURABLE RANGE OF PIGMENTED LEATHERS WITH AN EXPANSIVE AND VIBRANT COLOUR PALATE OF 60 COLORS.



pelleleathers.com.au
+ 61 2 9460 9222

SPECTRUM COLOURS



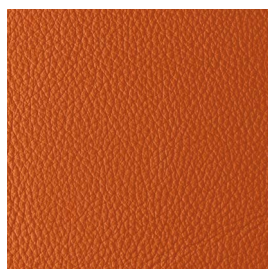
ABYSS

1000



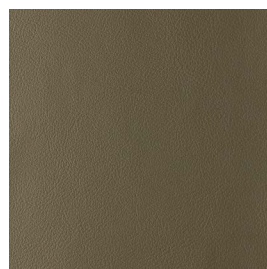
ALASKA

5626



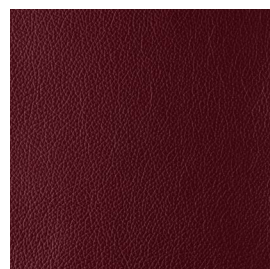
APRICOT

1444



ARTICHOKE

7794



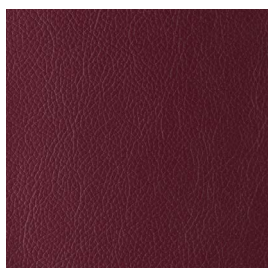
BRICK

1235



BLOSSOM

5122



CARMINE

5121



CIEL

5129



CHESTNUT

2418



CLAY

8462



CLOUD

1614



CRANBERRY

4607



ELEPHANT

7161



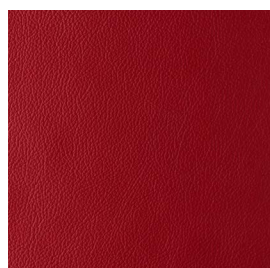
EMBER

7255



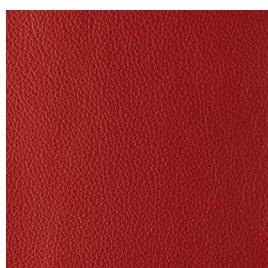
FAWN

2334



FIRE

4130



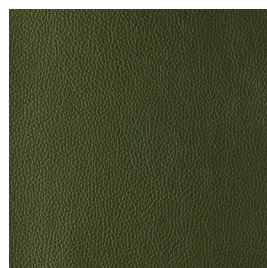
FLAME

1562



FUSCHIA

6635



HAZEL

7713



INDIANA

7458



LUSTRE

1565



MILK

0100



MILO

1268



MINT

7601



MUD

2000



NEPHRITE

5125



PACIFIC

7575



PEARL

3214



PORPOISE

7512



PUMICE

1255

SPECTRUM COLOURS



PURPLE

6682



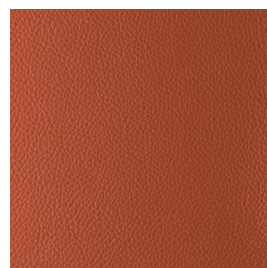
RIVIERA

5627



SATURN

7824



SEDONA

5123



SCOTCH

7246



SNOW

9000



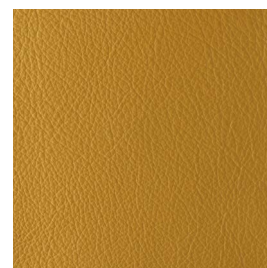
SMOKE

1181



SOYA

3000



TOPAZ

8602



TURF

5124



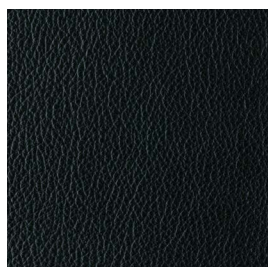
TUSK

3692



VALENCIA

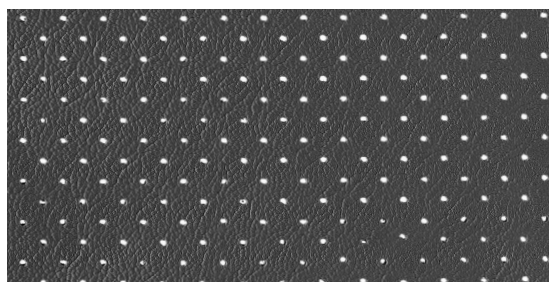
1444



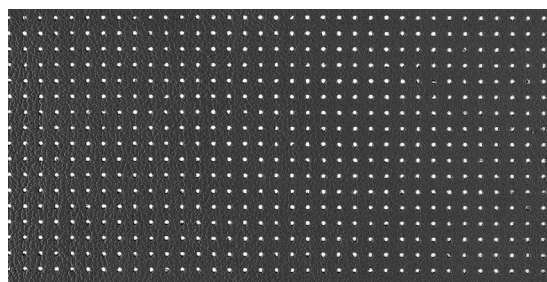
VINTAGE

7000

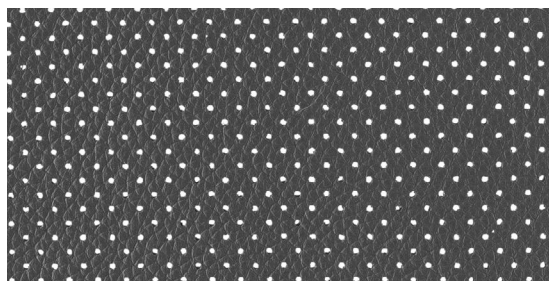
SPECTRUM PERFORATION OPTIONS



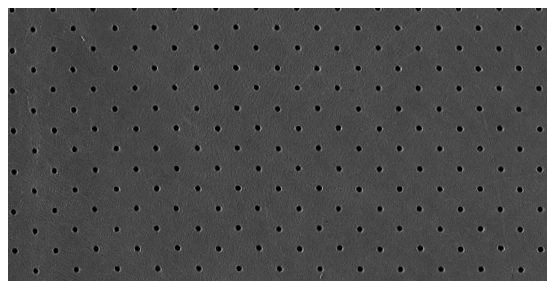
MK1



MK2

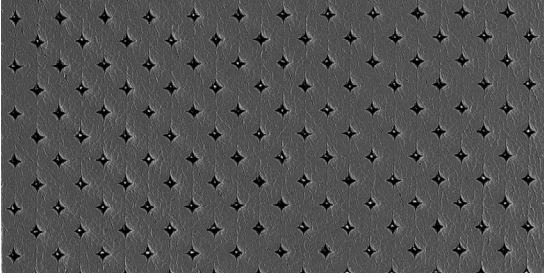


MK3



PINPOINT

SPECTRUM PERFORATION OPTIONS



PIQUE

SPECTRUM DETAILS



SUBTLE GRAIN, PIGMENTED

Spectrum is a superb range of pigmented leather with an expansive colour palate of 60 vibrant colours. It is a remarkably supple leather, displaying a minimum of natural imperfections. This provides an excellent yield and an exquisite appearance for use in a variety of applications, including any commercial or residential furniture and wall covering needs.

APPLICATIONS	Upholstery, Wall Panelling
HIDE SIZE (IN SQM)	5.5
THICKNESS (IN MM)	1.0-1.2

CHARACTERISTIC	TEST METHOD	TEST RESULTS
COLOUR FASTNESS TO RUBBING	EN ISO 11640	Dry 4
	EN ISO 11640	Wet 4
FLEXING ENDURANCE	DIN 53351	50,000 flexes (no finish damage cracks)
TEAR STRENGTH	DIN 53329A	> 20 N
LIGHT FASTNESS	EN ISO 105-B02	6
FINISH ADHESION	IUF 470	2.5 N/cm
FLAME RESISTANCE	AS/NZS 1530.3	Ignitability 14 Spread of Flame 0 Heat Evolved 3 Smoke Developed 5
	AS/NZS 3837	meets BCA Group 1
	DIN EN 1021:1 and EN 1021:2 BS 5852:1 and BS 5852:2 ISO 8191:1 and ISO 8191:2 IMO A.652	

ENVIRONMENTAL

- All wastewater is cleaned in a biological treatment plant, recycled and reused. No PCP, Chrome VI, CADMIUM, FORMALDEHYDE or AZO – Col Dyes are used in the tanning process. All dyes and pigments (finishes) are solvent free ie. water based
- State of the art application technology optimizes the finishing process and greatly reduces the rate of airborne emissions
- Regular inspections are conducted to ensure that quality and environmental standards are maintained at all times
- Low VOC product

CARE OF LEATHER

- Do not place leather in direct sunlight
- Ensure a minimum of 80cm between furniture and heating source
- Avoid contact of leather with sharp objects
- Regularly clean and dust your leather with a clean dry cloth
- Remove food spills immediately. Do not scrub hard
- Avoid using harsh chemicals and / or cleaners that are oil or solvent based
- Only clean leather with approved upholstery leather cleaners in accordance with the manufacturer's instructions