



HAUS

HAUS IS A PREMIUM CORRECTED GRAIN LEATHER FROM GERMANY, AVAILABLE IN 14 WARM EARTH TONES WITH A LARGE HIDE SIZE AND SOFT HANDLE, IDEAL FOR DEMANDING UPHOLSTERY AND FURNITURE APPLICATIONS.



pelleleathers.com.au
+ 61 2 9460 9222

HAUS COLOURS



AMARONE

6208



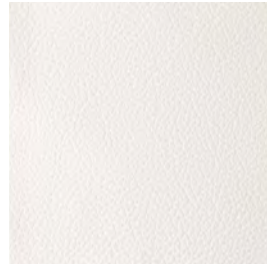
ARGENT

6202



BENGAL

6211



BRAHMAN

6213



CHALICE

6206



COURTYARD

6204



GREIGE

6205



HERFORD

6209



HIGHLAND

6216



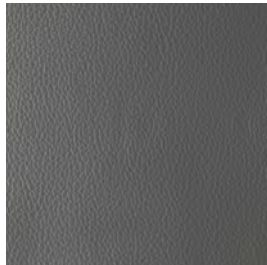
ISLE

6207



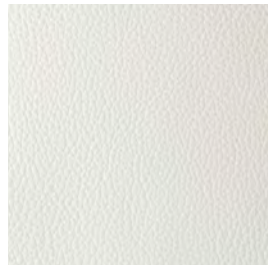
NEBULA

6215



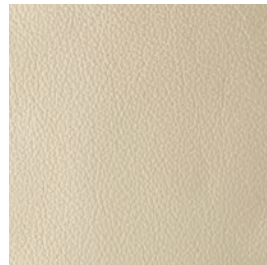
SHADE

6203



SILICON

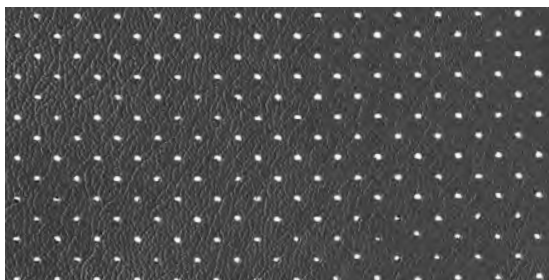
6214



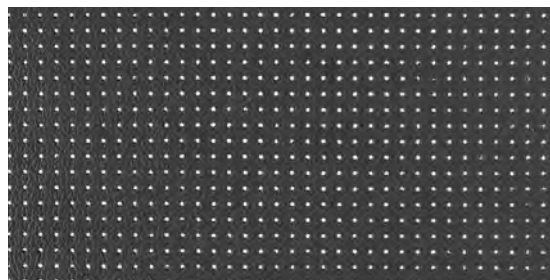
SIMMENTAL

6212

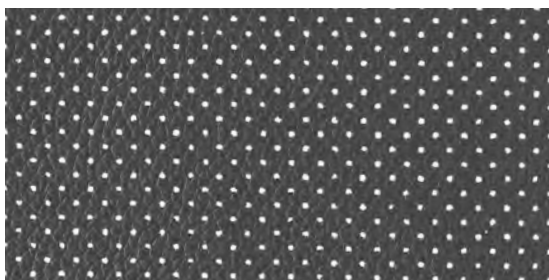
HAUS PERFORATION OPTIONS



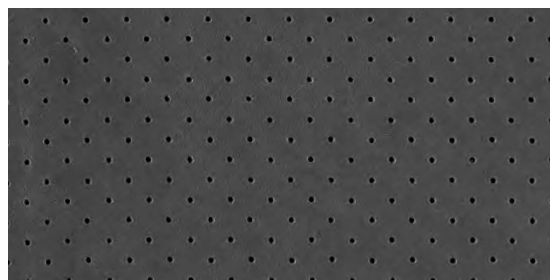
MK1



MK2



MK3



PINPOINT

HAUS DETAILS

CORRECTED GRAIN

Haus is a premium Corrected Grain leather produced in Germany on South German raw hides. With a versatile palette of 14 carefully selected warm earth tones, a large hide size and thick substance of 1.2-1.4 mm, the leather is durable and cutting yield is excellent. This combined with a soft handle, makes it suitable for the most demanding upholstery and furniture applications of any public space.

APPLICATIONS Upholstery, Wall Panelling, Curtain

HIDE SIZE (IN SQM) 5.6

THICKNESS (IN MM) 1.2-1.4

CHARACTERISTIC	TEST METHOD	TEST RESULTS		
LIGHT FASTNESS	EN ISO 105-B02	≥5		
TEAR STRENGTH	DIN EN ISO 3377-1	≥20 N/mm		
PERMANENT FOLDING BEHAVIOUR	DIN EN ISO 5402-1	50,000 flexes		
RUBBING STRENGTH	DIN EN ISO 11640	Dry	500 cycles	≥4
		Wet	250 cycles	3 - 4
		Perspiration	80 cycles	3 - 4
PH-VALUE	DIN EN ISO 4045	>3.5		
ADHESION OF FINISH	DIN EN ISO 11644 / IUF 470	≥2.5 N/10mm		
FLAME RESISTANCE	AS/NZS 1530.3	Ignitability	14	
		Spread of Flame	0	
		Heat Evolved	3	
		Smoke Developed	5	
	AS/NZS 3837 (AS 5637.1)	meets BCA Group 1		

ENVIRONMENTAL

- All wastewater is cleaned in a biological treatment plant, recycled and reused. No PCP, Chrome VI, CADMIUM, FORMALDEHYDE or AZO – Col Dyes are used in the tanning process. All dyes and pigments (finishes) are solvent free ie. water based
- State of the art application technology optimizes the finishing process and greatly reduces the rate of airborne emissions
- Regular inspections are conducted to ensure that quality and environmental standards are maintained at all times
- Low VOC product

CARE OF LEATHER

- Do not place leather in direct sunlight
- Ensure a minimum of 80cm between furniture and heating source
- Avoid contact of leather with sharp objects
- Regularly clean and dust your leather with a clean dry cloth
- Remove food spills immediately. Do not scrub hard
- Avoid using harsh chemicals and / or cleaners that are oil or solvent based
- Only clean leather with approved upholstery leather cleaners in accordance with the manufacturer's instructions