



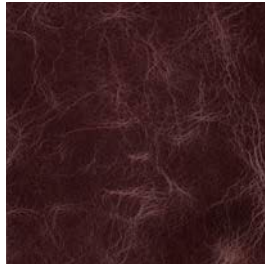
NEVADA

A PULL—UP ANILINE PRODUCED ON EUROPEAN HIDES, FINISHED WITH A VERY AGED AND DISTRESSED APPEARANCE DUE TO A BLEND OF WAX AND OILS TO THE GRAIN.

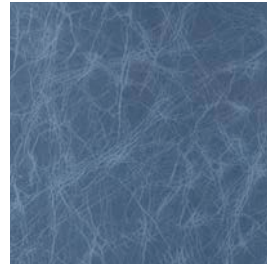
NEVADA COLOURS



BEETLE 4032



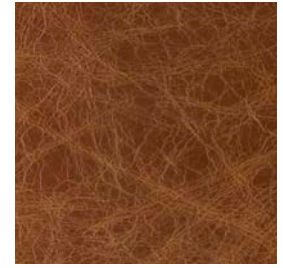
BUFFALO 4015



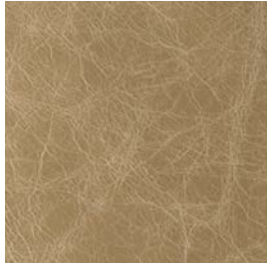
CASTAWAY 4020



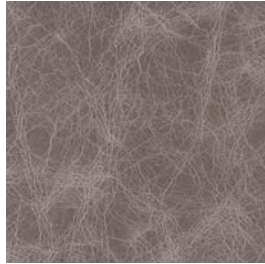
CHILL 4022



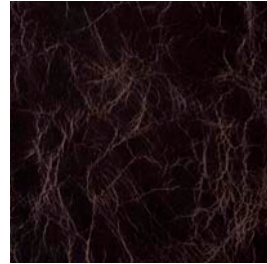
COTTO 4034



CROUTON 4037



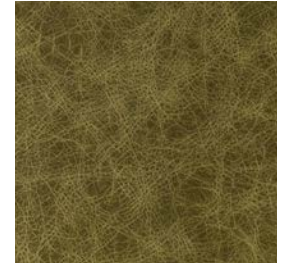
CUMULUS 4038



DOLCE 4013



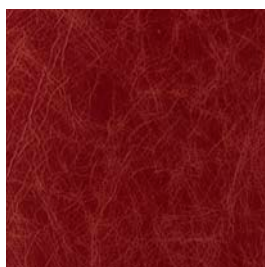
DUSK 4016



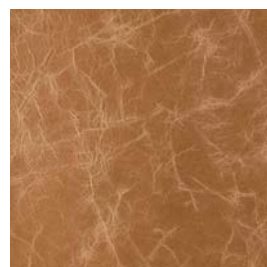
ERBA 4035



EVERGREEN 4012



INFERNO 4021



JERSEY 4011



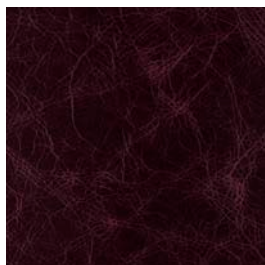
MIKAN 4033



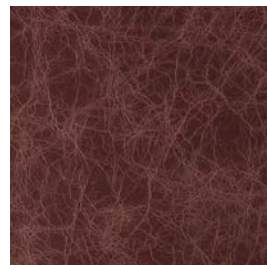
MOOSE 4010



OXFORD 4027



PLUM 4014



PORPORA 4031



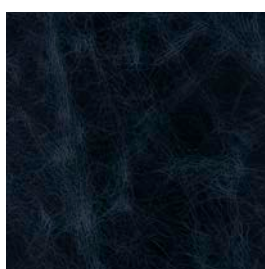
POMODORO 4028



PERIDOT 4024



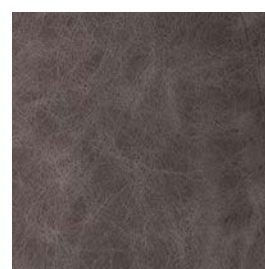
QUOKKA 4029



REGATTA 4018



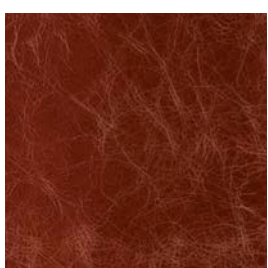
SCURO 4036



STRADA 4030



SHOJI 4023



VILLA 4017

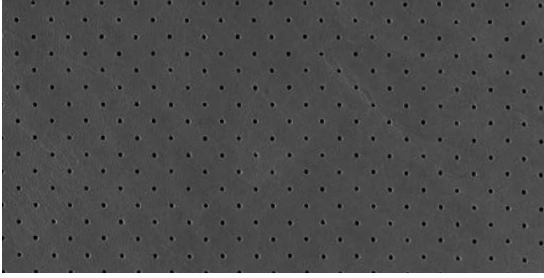


VERDANT 4025

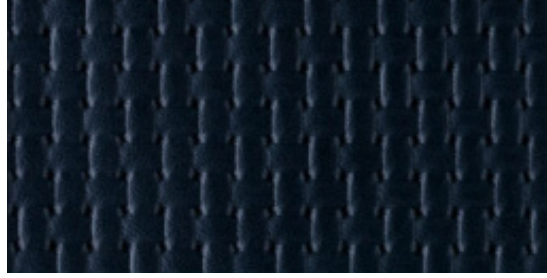


WOMBAT 4026

NEVADA PERFORATION OPTIONS



PINPOINT



BASKET WEAVE

NEVADA DETAILS

SMOOTH GRAIN, PULL UP - ANILINE

Nevada is a Pull Up Aniline leather produced on European hides. It has an aged, distressed appearance due to the blend of oil and wax applied to the surface. With an alluring colour palate and protective finish, Nevada is suitable for commercial and residential applications where quality and durability are paramount.

APPLICATIONS	Upholstery, Wall Panelling
HIDE SIZE (IN SQM)	5
THICKNESS (IN MM)	1.0-1.2

CHARACTERISTIC	TEST METHOD	TEST RESULTS	
COLOUR FASTNESS TO RUBBING	EN ISO 11640	Dry	3 - 4
	EN ISO 11640	Wet	3 - 4
FLEXING ENDURANCE	EN ISO 5402	50,000 flexes (no finish damage cracks)	
TEAR STRENGTH	EN ISO 3377-1	20	
LIGHT FASTNESS	EN ISO 105-B02	3	
FINISH ADHESION	EN ISO 5402/IUF 470	2.5 N/cm	
FLAME RESISTANCE	AS/NZS 1530.3	Ignitability	15
		Spread of Flame	0
		Heat Evolved	2
		Smoke Developed	5
	AS/NZS 3837	meets BCA Group 1	
	DIN EN 1021:1 and EN 1021:2		

ENVIRONMENTAL

- All wastewater is cleaned in a biological treatment plant, recycled and reused. No PCP, Chrome VI, CADMIUM, FORMALDEHYDE or AZO – Col Dyes are used in the tanning process. All dyes and pigments (finishes) are solvent free ie. water based
- State of the art application technology optimizes the finishing process and greatly reduces the rate of airborne emissions
- Regular inspections are conducted to ensure that quality and environmental standards are maintained at all times
- Low VOC product

CARE OF LEATHER

- Do not place leather in direct sunlight
- Ensure a minimum of 80cm between furniture and heating source
- Avoid contact of leather with sharp objects
- Regularly clean and dust your leather with a clean dry cloth
- Remove food spills immediately. Do not scrub hard
- Avoid using harsh chemicals and / or cleaners that are oil or solvent based
- Only clean leather with approved upholstery leather cleaners in accordance with the manufacturer's instructions