



BAVARIAN

BAVARIAN IS AN ANILINE LEATHER THAT HAS A NATURAL VINTAGE APPEARANCE WITH A VELVETY, SOFT HANDLE. THE LEATHER IS DYED THROUGH AND THE SURFACE IS IRONED, EXHIBITING A CAPTIVATING NATURAL AESTHETIC. OVER TIME, THIS BEAUTIFUL RANGE WILL AGE AND DEVELOP A PATINA.

BAVARIAN COLOURS



ALSACE

9306



COLVERT

9302



FORTIFIED

9308



INDIE

9304



INOX

9301



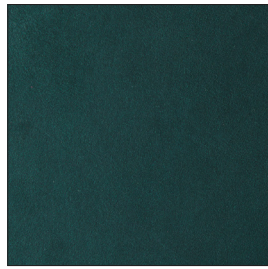
KILN

9305



PALETTE

9311



RACING GREEN

9303



SANDLEWOOD

9309



TRIADIC

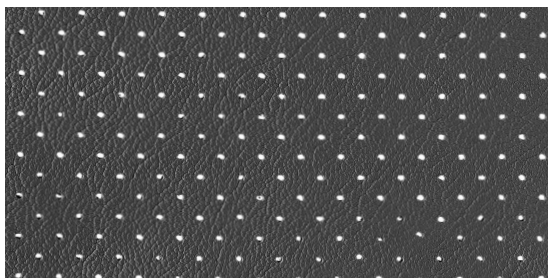
9310



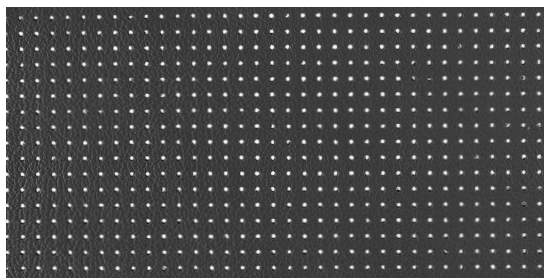
WALNUT

9307

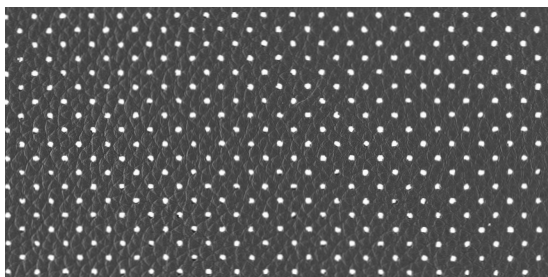
BAVARIAN PERFORATION OPTIONS



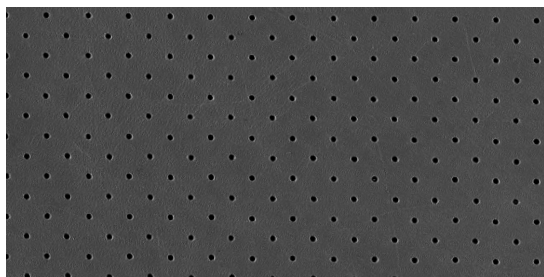
MK1



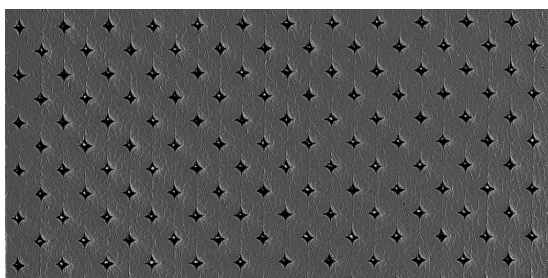
MK2



MK3



PINPOINT



PIQUE

BAVARIAN DETAILS

ANILINE LEATHER

Bavarian is an Aniline leather that has a natural vintage appearance with a velvety, soft handle. The leather is dyed through and the surface is ironed, exhibiting a captivating natural aesthetic.

Over time, this beautiful range will age and develop a patina.

APPLICATIONS	Furniture, office and contract upholstery
HIDE SIZE (IN SQM)	5.5
THICKNESS (IN MM)	1.0-1.2

CHARACTERISTIC	TEST METHOD	TEST RESULTS	
COLOUR FASTNESS TO RUBBING	EN ISO 11640	Dry	3
	EN ISO 11640	Wet	3
TEAR STRENGTH	DIN 53329 / EN ISO 3377-1	≥ 20 N/mm	
LIGHT FASTNESS	EN ISO 105-B02	3	
FLAME RESISTANCE	AS / NZS 1530.3 Pass	Ignitability	16
		Spread of Flame	0
		Heat Evolved	2
		Smoke Developed	3
		AS 3837:1998 Pass: Meets Group 1	
	EN 1021: 1 and EN 1021 :2		

ENVIRONMENTAL

- All Pelle Leathers' ranges are low VOC.
- Leather is free from PCP and Azo-col and passes all European environmental standards.
- The tannery producing the article Bavarian is Blue Angel Eco label certified.

CARE OF LEATHER

- Do not place leather in direct sunlight.
- Ensure a minimum of 80cm between furniture and heating source.
- Avoid contact of leather with sharp objects.
- Regularly clean and dust your leather with a clean dry cloth.
- Remove food spills immediately. Do not scrub hard.
- Avoid using harsh chemicals and / or cleaners that are oil or solvent based.
- Only clean leather with approved upholstery leather cleaners in accordance with the manufacturer's instructions.