



BIO-PELLE

A PIGMENTED LEATHER WITH A 99.9% EFFECTIVE ANTI-BACTERIAL AND ANTIVIRAL TREATMENT. AVAILABLE IN A DIVERSE COLOUR PALETTE.



pelleleathers.com.au
+ 61 2 9460 9222

BIO-PELLE COLOURS

				
ACORN 9511	ADRIATIC 9550	ANISE 9512	ARID 9523	ATLANTIS 9555
				
BACI 9531	BOOMERANG 9529	BURMESE 9554	CABIN 9527	CAPER 9547
				
CHEDDAR 9506	COLOSSEUM 9557	COTSWOLDS 9521	CREPE 9501	CUMIN 9507
				
DORSET 9510	DUET 9508	ESKIMO 9500	FLOCK 9524	GOJI 9519
				
GROVE 9546	HARBOUR 9551	HARLEM 9526	ILLUSION 9538	LYNX 9522
				
MAGNOLIA 9537	MALBEC 9533	MARSH 9548	MAYFAIR 9544	MOON 9540

BIO-PELLE COLOURS



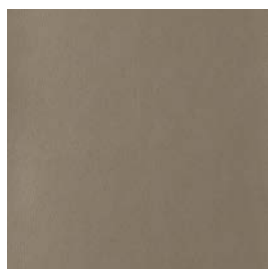
NIAGRA

9552



OATMEAL

9520



PAGODA

9528



PARKLAND

9549



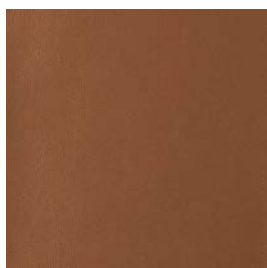
PETAL

9536



PITCH

9509



PLANET

9513



POPPY

9517



PORTOBELLO

9525



POSTBOX

9518



PRISM

9553



PYRAMID

9556



RAFFIA

9545



RAISIN

9515



RIPASSO

9534



RYE

9502



SCUBA

9541



SEVILLE

9516



SOLEIL

9505



SPIRIT

9543



STALK

9503



STIRLING

9532



SYRAH

9535



TOTEM

9514



TRAFALGAR

9539



TURBULENT

9558



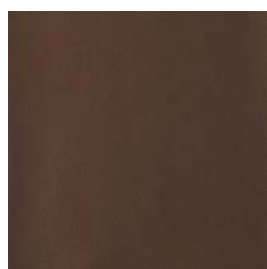
VERDELHO

9504



WHISPER

9542



WOLF

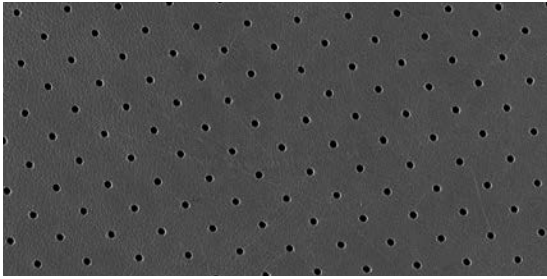
9530



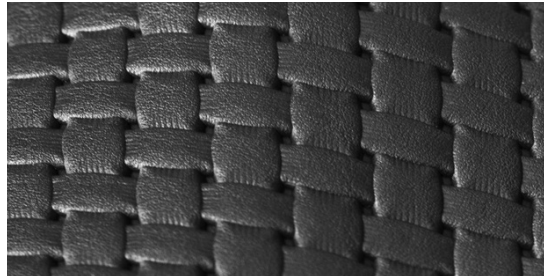
ZULU

9559

BIO-PELLE PERFORATION OPTIONS



PINPOINT



BASKET WEAVE

BIO-PELLE DETAILS

PIGMENTED

Bio-Pelle is a pigmented leather that has been developed with the latest innovative anti-bacterial and antiviral treatment / protection. Bio-Pelle offers a 99.9% permanent and effective protection level on the leather surface to prevent viruses and bacteria from surviving and replicating on the leather surface. Bio-Pelle is a drum dyed and vacuum dried leather that exhibits a smooth appearance with a soft, pliable handle. With a diverse colour palette, Bio-Pelle can be used in a variety of applications including public spaces, contract upholstery, aged care and marine.

APPLICATIONS	Furniture, office, aged care, public spaces, marine and contract upholstery
HIDE SIZE (IN SQM)	5
THICKNESS (IN MM)	1.1-1.3

CHARACTERISTIC	TEST METHOD	TEST RESULTS	
COLOUR FASTNESS TO RUBBING	EN ISO 11640 EN ISO 11640	Dry Wet	4-5 4-5
FLEXING ENDURANCE	DIN 53351 / EN ISO 5402	50,000 flexes (no finish damage cracks)	
TEAR STRENGTH	DIN 53329 / EN ISO 3377-1	20 N/cm	
LIGHT FASTNESS	EN ISO 105-B02	6	
FINISH ADHESION	EN ISO 11644	2.5 N/cm	
FLAME RESISTANCE	AS/NZS 1530.3 Report No. 22-000662 DIN EN 1021: 1 and EN 1021 :2 AS 3837:1998	Ignitability Spread of Flame Heat Evolved Smoke Developed	16 0 3 5
ANTI-BACTERIAL	ISO 22196 ISO 16187 ASTM E 2149 ASTM E 2180		
ANTI-VIRAL	ISO 18184		

ENVIRONMENTAL

- All wastewater is cleaned in a biological treatment plant, recycled and reused. No PCP, Chrome VI, CADMIUM, FORMALDEHYDE or AZO – Col Dyes are used in the tanning process. All dyes and pigments (finishes) are solvent free i.e. water based
- State of the art application technology optimizes the finishing process and greatly reduces the rate of airborne emissions.
- Regular inspections are conducted to ensure that quality and environmental standards are maintained at all times.
- Low VOC product.

CARE OF LEATHER

- Do not place leather in direct sunlight.
- Ensure a minimum of 80cm between furniture and heating source.
- Avoid contact of leather with sharp objects.
- Regularly clean and dust your leather with a clean dry cloth.
- Remove food spills immediately. Do not scrub hard.
- Avoid using harsh chemicals and / or cleaners that are oil or solvent based.
- Only clean leather with approved upholstery leather cleaners in accordance with the manufacturer's instructions.