



DROVER

A SUPERB SEMI-ANILINE LEATHER WITH A HAND POLISHED AND ANTIQUE WAX FINISH, PRODUCING A UNIQUE AND LUSTROUS PATINA OF THE PAST.

 **pelleleathers**

pelleleathers.com.au
+ 61 2 9460 9222

DROVER COLOURS



ALMOND 3840



BLACK 3810



CINNAMON 3890



DAINTREE 3815



FONDANT 3850



HAVANA 3800



MOLASSES 3870



MOUTON 3820



PISTACHIO 3860



RISTRETTO 3880

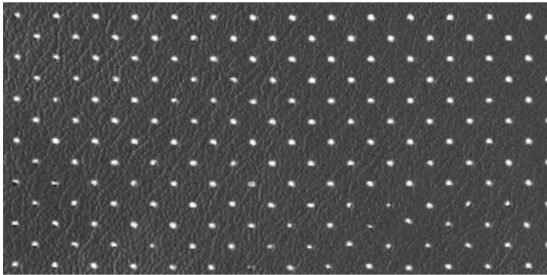


RIVERGUM 3805

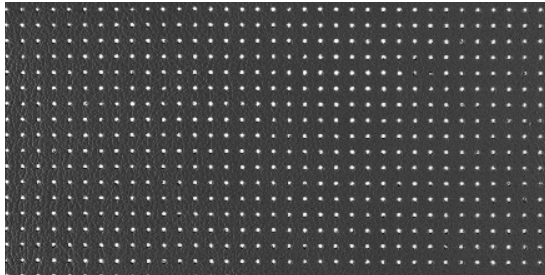


SYCAMORE 3830

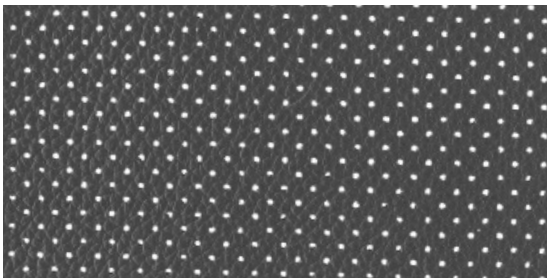
DROVER PERFORATION OPTIONS



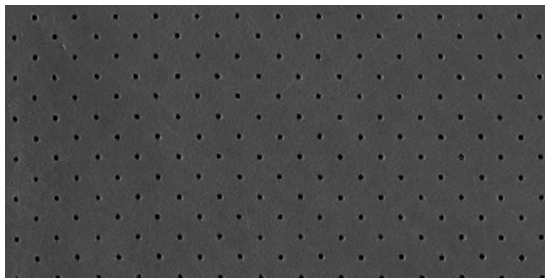
MK 1



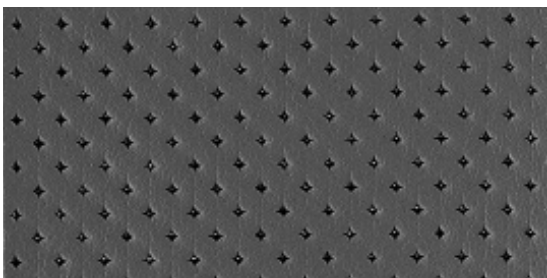
MK 2



MK 3



PINPOINT



PIQUE

DROVER DETAILS

SMOOTH GRAIN, SEMI - ANILINE

Drover is a superb Semi-Aniline leather with a hand polished, antique wax finish. Available in 11 warm, natural earth tones, Drover provides a unique smooth, lustrous patina of the past, with all the attributes of a Semi-Aniline performance. Drover is ideally suited for both commercial, hospitality and residential applications.

APPLICATIONS	Upholstery, Wall Panelling, Curtain
HIDE SIZE (IN SQM)	5.6
THICKNESS (IN MM)	1.0-1.2

CHARACTERISTIC	TEST METHOD	TEST RESULTS
COLOUR FASTNESS TO RUBBING	EN ISO 11640	Dry 4
	EN ISO 11640	Wet 4
FLEXING ENDURANCE	EN ISO 5402	50,000 flexes (no finish damage cracks)
TEAR STRENGTH	EN ISO 3377-1	> 40 N
LIGHT FASTNESS	EN ISO 105-B02	4-5
FINISH ADHESION	EN ISO 5402/IUF 470	2.0 N/cm
FLAME RESISTANCE	AS/NZS 1530.3	Ignitability 15
		Spread of Flame 0
		Heat Evolved 1
		Smoke Developed 5
	AS/NZS 3837	meets BCA Group 1
	DIN EN 1021:1 and EN 1021:2	

ENVIRONMENTAL

- All wastewater is cleaned in a biological treatment plant, recycled and reused. No PCP, Chrome VI, CADMIUM, FORMALDEHYDE or AZO - Col Dyes are used in the tanning process. All dyes and pigments (finishes) are solvent free ie. water based
- State of the art application technology optimizes the finishing process and greatly reduces the rate of airborne emissions
- Regular inspections are conducted to ensure that quality and environmental standards are maintained at all times
- Low VOC product

CARE OF LEATHER

- Do not place leather in direct sunlight
- Ensure a minimum of 80cm between furniture and heating source
- Avoid contact of leather with sharp objects
- Regularly clean and dust your leather with a clean dry cloth
- Remove food spills immediately. Do not scrub hard
- Avoid using harsh chemicals and / or cleaners that are oil or solvent based
- Only clean leather with approved upholstery leather cleaners in accordance with the manufacturer's instructions