



BAROLO

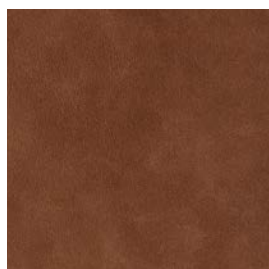
BAROLO IS A SUMPTUOUS ANILINE LEATHER WITH A SMOOTH, MATT APPEARANCE.



pelleleathers

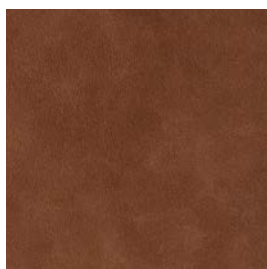
pelleleathers.com.au
+ 61 2 9460 9222

BAROLO COLOURS



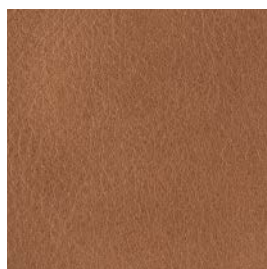
AZTEC

3511



BOTANIC

3501



BURROW

3512



CHAMOIS

3502



DINGO

3515



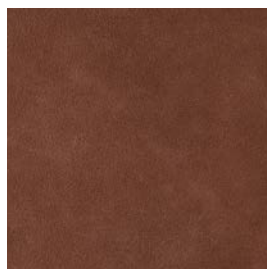
GOTHIC

3504



JASPER

3509



KALGOORLIE

3510



MALLEE

3514



MIRAGE

3506



NOCTURNAL

3507



OLYMPIA

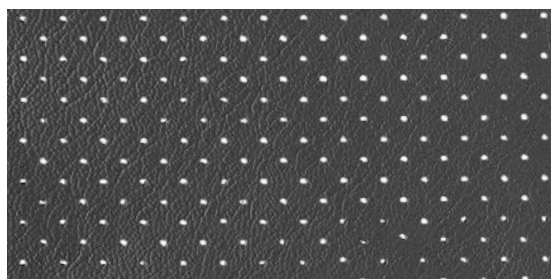
3503



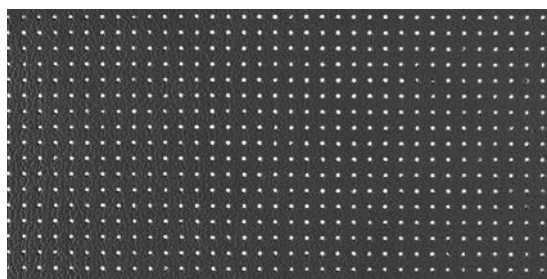
VIPER

3508

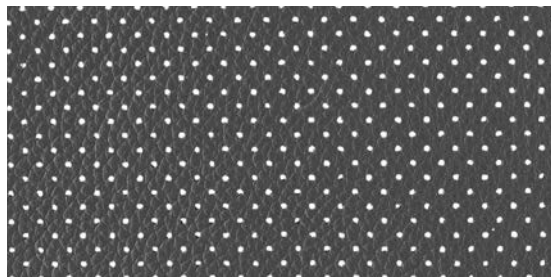
BAROLO PERFORATION OPTIONS



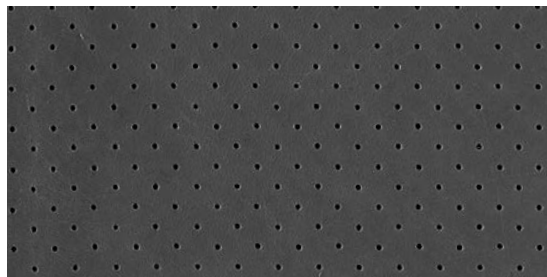
MK1



MK2



MK3



PINPOINT

BAROLO DETAILS

SMOOTH GRAIN, ANILINE

Barolo is a sumptuous Aniline leather with a smooth, matt appearance. To emphasize nature and the true characteristics of an Aniline leather, natural markings such as growth marks and fat wrinkles being unique characteristics to each hide. These features of an Aniline leather, combined with a protective surface wax application, ensures Barolo is suitable for both commercial and residential applications.

APPLICATIONS	Furniture, office, wall panelling and contract upholstery
HIDE SIZE (IN SQM)	5.2
THICKNESS (IN MM)	1.2-1.4

CHARACTERISTIC	TEST METHOD	TEST RESULTS
COLOUR FASTNESS TO RUBBING	EN ISO 11640 EN ISO 11640 EN ISO 11641	Dry ≥3 Wet ≥3 Perspiration ≥3
TEAR STRENGTH	I.U.P /8	≥ 20 N
COLOURFASTNESS TO LIGHT	EN ISO 105-B02	≥3
pH	EN ISO 4045	≥3.2
FLAME RESISTANCE	AS/NZS 1530.3	Ignitability 16 Spread of Flame 0 Heat Evolved 3 Smoke Developed 1
	AS/NZS 3837	meets BCA Group 1
	DIN EN 1021:1 and EN 1021:2	

ENVIRONMENTAL	CARE OF LEATHER
<ul style="list-style-type: none">• All wastewater is cleaned in a biological treatment plant, recycled and reused. No PCP, Chrome VI, CADMIUM, FORMALDEHYDE or AZO – Col Dyes are used in the tanning process. All dyes and pigments (finishes) are solvent free ie. water based• State of the art application technology optimizes the finishing process and greatly reduces the rate of airborne emissions• Regular inspections are conducted to ensure that quality and environmental standards are maintained at all times• Low VOC product	<ul style="list-style-type: none">• Do not place leather in direct sunlight• Ensure a minimum of 80cm between furniture and heating source• Avoid contact of leather with sharp objects• Regularly clean and dust your leather with a clean dry cloth• Remove food spills immediately. Do not scrub hard• Avoid using harsh chemicals and / or cleaners that are oil or solvent based• Only clean leather with approved upholstery leather cleaners in accordance with the manufacturer's instructions