



## TOLEDO

AN EXQUISITE VACUUM DRIED ANILINE LEATHER WITH A  
SOFT WAXED SURFACE.



[pelleleathers.com.au](http://pelleleathers.com.au)  
+ 61 2 9460 9222

# TOLEDO COLOURS



ADMIRAL 4519



AFRICAN 4529



ANCHOR 4532



ARUNA 4512



BUFF 4504



CARNIVAL 4511



CHORIZO 4528



CHURROS 4503



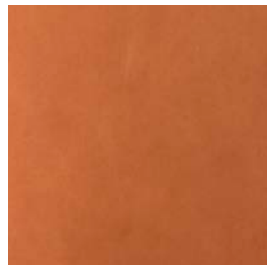
CIDER 4502



DIM 4520



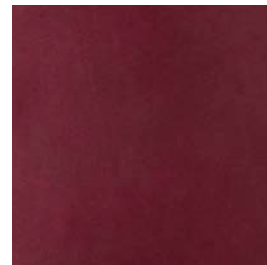
DORADO 4506



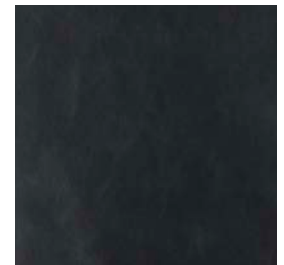
GARNET 4507



GAZPACHO 4509



GRANA 4514



HIGHWAY 4521



IMPERIAL 4510



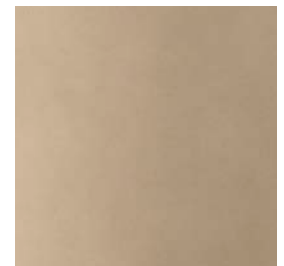
JUNGLE 4525



JUNIPER 4518



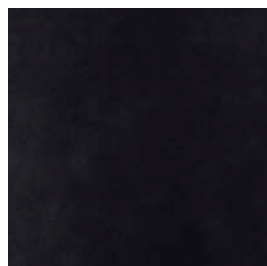
LEPRECHAUN 4524



PAELLA 4526



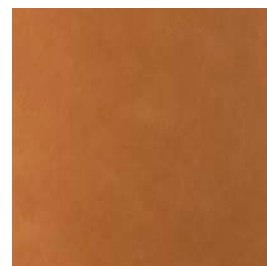
PLATEADO 4531



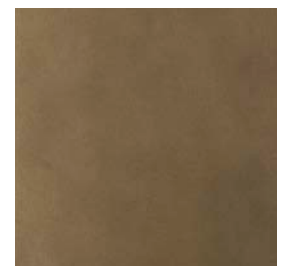
RAVEN 4533



ROSA 4515



SCHNAPPS 4508



SHEPARD 4522

## TOLEDO COLOURS



SPRING

4523



SUMMER

4505



THYME

4534



TORTILLA

4501



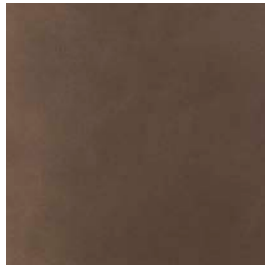
ULTRA

4517



UNIVERSE

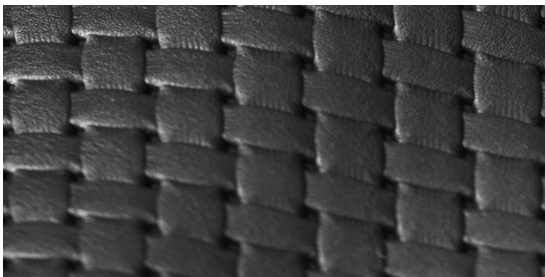
4516



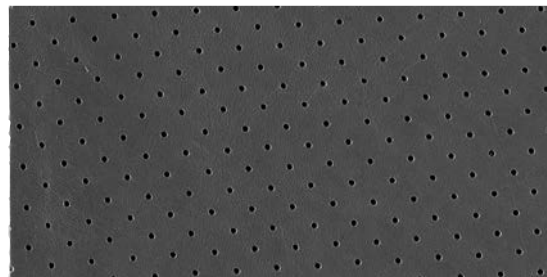
VILLAGE

4527

## TOLEDO PERFORATION OPTIONS



BASKET WEAVE



PINPOINT

# TOLEDO DETAILS

## SMOOTH GRAIN, ANILINE

Toledo is an exquisite vacuum dried Aniline leather with a soft waxed surface that is instantly alluring in both handle and appearance. Produced on the finest of European raw material and with an extensive and diverse colour palette, Toledo is sure to attract the most discerning of specifiers. Age and wear will only enhance this leather.

---

APPLICATIONS	Upholstery, Wall Panelling, Curtain
HIDE SIZE (IN SQM)	4.5 - 5.5
THICKNESS (IN MM)	1.0-1.2

---

CHARACTERISTIC	TEST METHOD	TEST RESULTS
COLOURFASTNESS TO LIGHT	EN ISO 105-B02	≥3
COLOUR FASTNESS TO RUBBING	EN ISO 11640	Dry ≥3
	EN ISO 11640	Wet ≥3
	EN ISO 11641	Perspiration ≥3
FLEXING ENDURANCE	EN ISO 5402	30,000 flexes
TEAR STRENGTH	EN ISO 3377-1	≥ 20 N
LIGHT FASTNESS	EN ISO 105-B02	6
FINISH ADHESION	EN ISO 11644	2.00 N/cm
FLAME RESISTANCE	AS 1530.3	

EN 1021: 1 and EN 1021 :2

---

### ENVIRONMENTAL

- Fulfilled Blue Angel ecolabel VOC test \*by TUV Rheinland
- All wastewater is cleaned in a biological treatment plant, recycled and reused. No PCP, Chrome VI, CADMIUM, FORMALDEHYDE or AZO – Col Dyes are used in the tanning process. All dyes and pigments (finishes) are solvent free i.e. water based
- State of the art application technology optimizes the finishing process and greatly reduces the rate of airborne emissions.
- Regular inspections are conducted to ensure that quality and environmental standards are maintained at all times.
- Low VOC product.

---

### CARE OF LEATHER

- Do not place leather in direct sunlight.
- Ensure a minimum of 80cm between furniture and heating source.
- Avoid contact of leather with sharp objects.
- Regularly clean and dust your leather with a clean dry cloth.
- Remove food spills immediately. Do not scrub hard.
- Avoid using harsh chemicals and / or cleaners that are oil or solvent based.
- Only clean leather with approved upholstery leather cleaners in accordance with the manufacturer's instructions.