



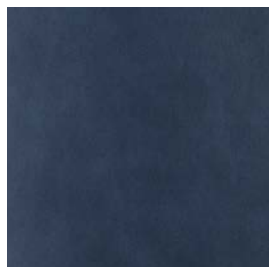
TOLEDO

AN EXQUISITE VACUUM DRIED ANILINE LEATHER WITH A
SOFT WAXED SURFACE.



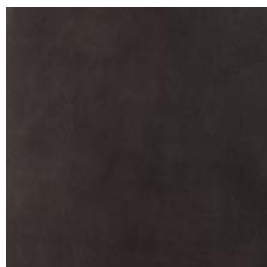
pelleleathers.com.au
+ 61 2 9460 9222

TOLEDO COLOURS



ADMIRAL

4519



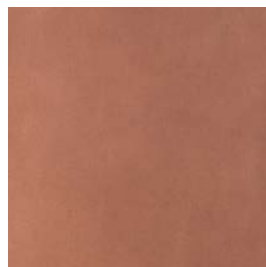
AFRICAN

4529



ANCHOR

4532



ARUNA

4512



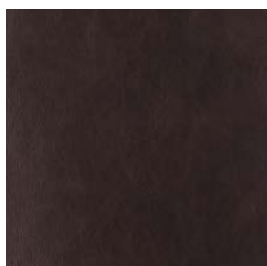
BUFF

4504



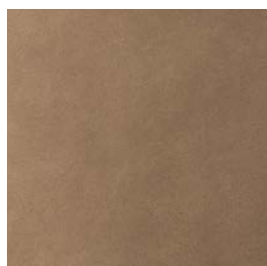
CARNIVAL

4511



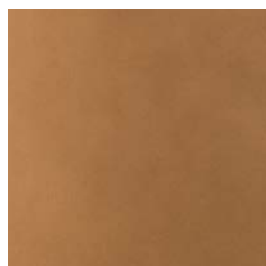
CHORIZO

4528



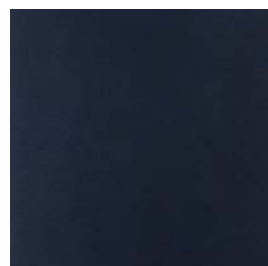
CHURROS

4503



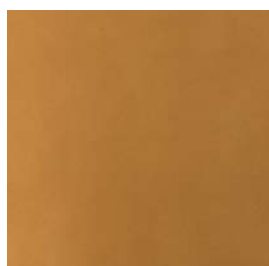
CIDER

4502



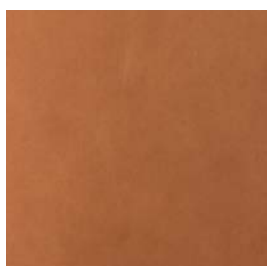
DIM

4520



DORADO

4506



GARNET

4507



GAZPACHO

4509



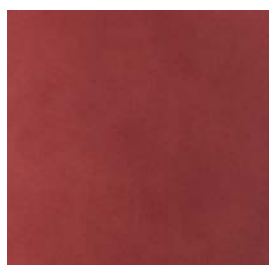
GRANA

4514



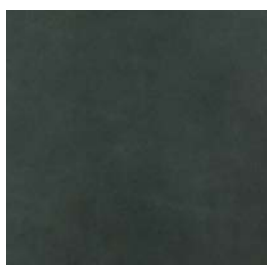
HIGHWAY

4521



IMPERIAL

4510



JUNGLE

4525



JUNIPER

4518



LEPRECHAUN

4524



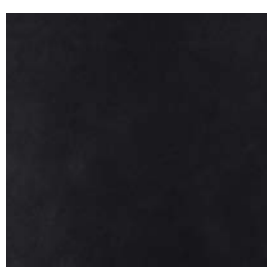
PAELLA

4526



PLATEADO

4531



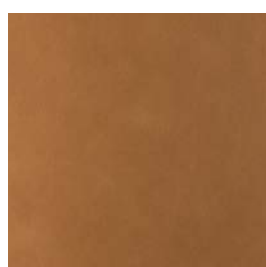
RAVEN

4533



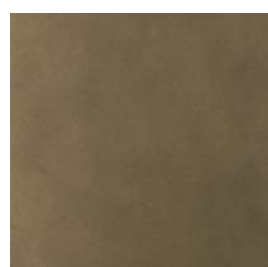
ROSA

4515



SCHNAPPS

4508



SHEPHERD

4522

TOLEDO COLOURS



SPRING

4523



SUMMER

4505



TORTILLA

4501



ULTRA

4517



UNIVERSE

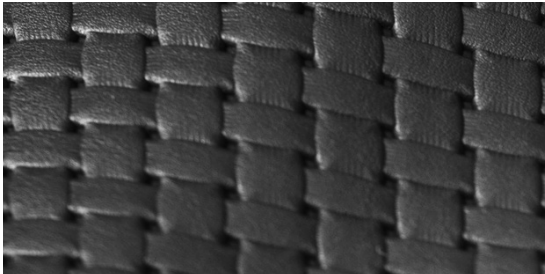
4516



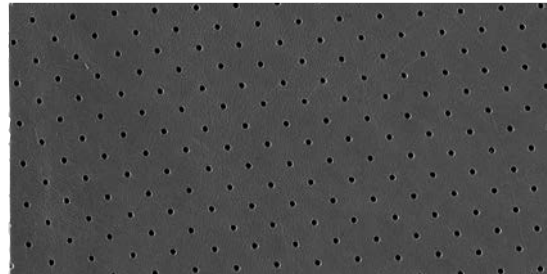
VILLAGE

4527

TOLEDO PERFORATION OPTIONS



BASKET WEAVE



PINPOINT

TOLEDO DETAILS

SMOOTH GRAIN, ANILINE

Toledo is an exquisite vacuum dried Aniline leather with a soft waxed surface that is instantly alluring in both handle and appearance. Produced on the finest of European raw material and with an extensive and diverse colour palette, Toledo is sure to attract the most discerning of specifiers. Age and wear will only enhance this leather.

APPLICATIONS	Upholstery, Wall Panelling, Curtain
HIDE SIZE (IN SQM)	4.5 - 5.5
THICKNESS (IN MM)	1.0-1.2

CHARACTERISTIC	TEST METHOD	TEST RESULTS
COLOURFASTNESS TO LIGHT	EN ISO 105-B02	≥ 3
COLOUR FASTNESS TO RUBBING	EN ISO 11640	Dry ≥ 3
	EN ISO 11640	Wet ≥ 3
	EN ISO 11641	Perspiration ≥ 3
FLEXING ENDURANCE	EN ISO 5402	30,000 flexes
TEAR STRENGTH	EN ISO 3377-1	≥ 20 N
LIGHT FASTNESS	EN ISO 105-B02	3
FINISH ADHESION	EN ISO 11644	2.00 N/cm
FLAME RESISTANCE	AS 1530.3	
	AS 3837	
	EN 1021: 1 and EN 1021 :2	

ENVIRONMENTAL

- All wastewater is cleaned in a biological treatment plant, recycled and reused. No PCP, Chrome VI, CADMIUM, FORMALDEHYDE or AZO - Col Dyes are used in the tanning process. All dyes and pigments (finishes) are solvent free i.e. water based
- State of the art application technology optimizes the finishing process and greatly reduces the rate of airborne emissions.
- Regular inspections are conducted to ensure that quality and environmental standards are maintained at all times.
- Low VOC product.

CARE OF LEATHER

- Do not place leather in direct sunlight.
- Ensure a minimum of 80cm between furniture and heating source.
- Avoid contact of leather with sharp objects.
- Regularly clean and dust your leather with a clean dry cloth.
- Remove food spills immediately. Do not scrub hard.
- Avoid using harsh chemicals and / or cleaners that are oil or solvent based.
- Only clean leather with approved upholstery leather cleaners in accordance with the manufacturer's instructions.