



SPECTRUM

A DURABLE RANGE OF PIGMENTED LEATHERS WITH AN EXPANSIVE AND VIBRANT COLOUR PALATE OF 54 COLORS.



pelleleathers.com.au
+ 61 2 9460 9222

SPECTRUM COLOURS



ABYSS

1000



ALASKA

5626



APRICOT

1444



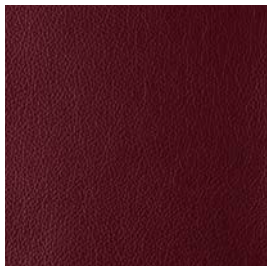
AQUAMARINE

1521



ARTICHOKE

7794



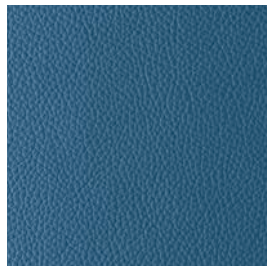
BRICK

1235



BUBBLE

6626



CEIL

5129



CHESTNUT

2418



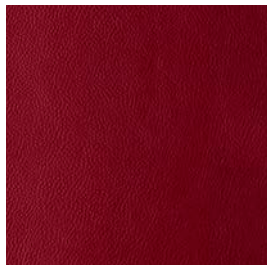
CLAY

8462



CLOUD

1614



CRANBERRY

4607



CYBER

8040



EARTH

1238



ELEPHANT

7161



EMBER

7255



EMERALD

7622



FAWN

2334



FIRE

4130



FLAME

1562



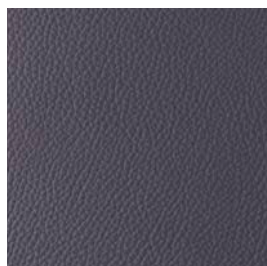
FUSCHIA

6635



GHOST

1310



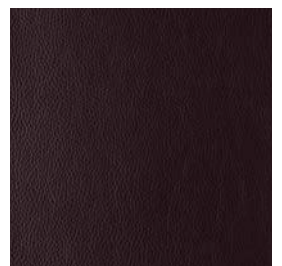
GRAVEL

2150



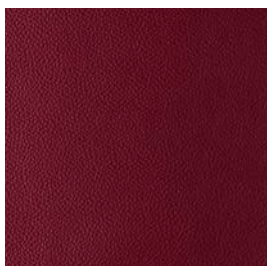
HAZEL

7713



INCA

2015



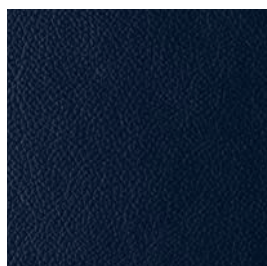
INDIANA

7458



JELLY

7936



LUSTRE

1565



MARTINI

7322



MATADOR

1463

SPECTRUM COLOURS



MILK 0100



MILO 1268



MINT 7601



MUD 2000



OXBLOOD 4000



PACIFIC 7575



PEARL 3214



PETUNIA 6692



PHANTOM 7672



PIAZZA 7210



PORPOISE 7512



PUMICE 1255



PURPLE 6682



RASPBERRY 6642



RIVIERA 5627



SATURN 7824



SNOW 9000



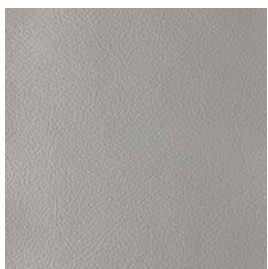
SMOKE 1181



SOYA 3000



TOPAZ 8602



TUSK 3692



TWILIGHT 7562

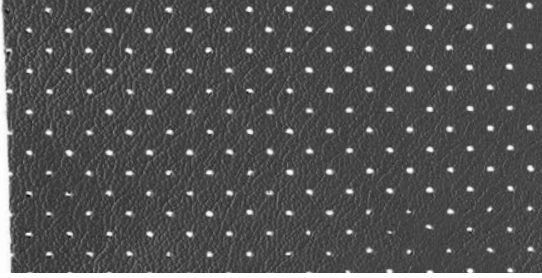


VALENCIA 1444

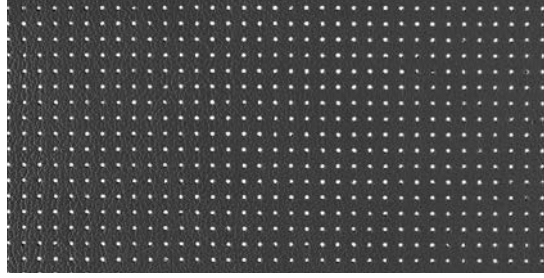


VINTAGE 7000

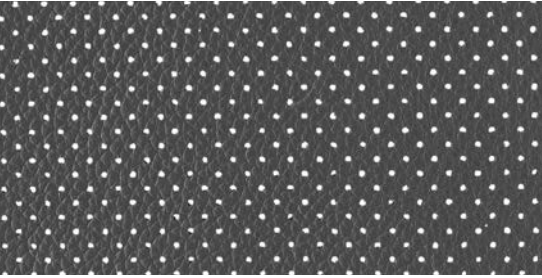
SPECTRUM PERFORATION OPTIONS



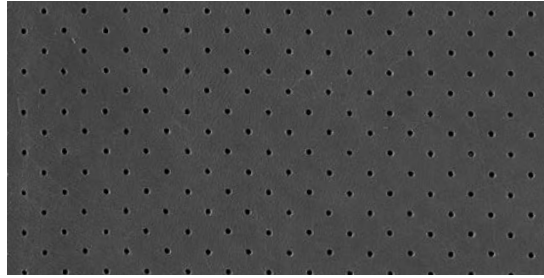
MK 1



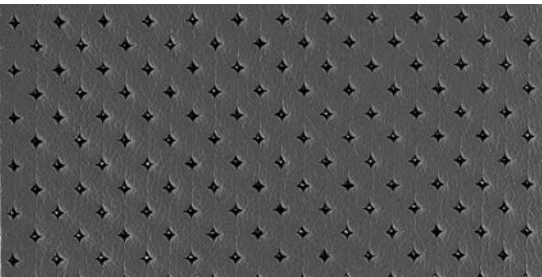
MK 2



MK 3



PINPOINT



PIQUE

SPECTRUM DETAILS



SUBTLE GRAIN, PIGMENTED

Spectrum is a superb range of pigmented leather with an expansive colour palate of 54 vibrant colours. It is a remarkably supple leather, displaying a minimum of natural imperfections. This provides an excellent yield and an exquisite appearance for use in a variety of applications, including any commercial or residential furniture and wall covering needs.

APPLICATIONS	Upholstery, Wall Panelling
HIDE SIZE (IN SQM)	5.5
THICKNESS (IN MM)	1.0-1.2

CHARACTERISTIC	TEST METHOD	TEST RESULTS
COLOUR FASTNESS TO RUBBING	EN ISO 11640	Dry 4
	EN ISO 11640	Wet 4
FLEXING ENDURANCE	DIN 53351	50,000 flexes (no finish damage cracks)
TEAR STRENGTH	DIN 53329A	> 20 N
LIGHT FASTNESS	EN ISO 105-B02	6
FINISH ADHESION	IUF 470	2.5 N/cm
FLAME RESISTANCE	AS/NZS 1530.3	Ignitability 14 Spread of Flame 0 Heat Evolved 3 Smoke Developed 5
	AS/NZS 3837	meets BCA Group 1
	DIN EN 1021:1 and EN 1021:2 BS 5852:1 and BS 5852:2 ISO 8191:1 and ISO 8191:2 IMO A.652	

ENVIRONMENTAL

- All wastewater is cleaned in a biological treatment plant, recycled and reused. No PCP, Chrome VI, CADMIUM, FORMALDEHYDE or AZO - Col Dyes are used in the tanning process. All dyes and pigments (finishes) are solvent free ie. water based
- State of the art application technology optimizes the finishing process and greatly reduces the rate of airborne emissions
- Regular inspections are conducted to ensure that quality and environmental standards are maintained at all times
- Low VOC product

CARE OF LEATHER

- Do not place leather in direct sunlight
- Ensure a minimum of 80cm between furniture and heating source
- Avoid contact of leather with sharp objects
- Regularly clean and dust your leather with a clean dry cloth
- Remove food spills immediately. Do not scrub hard
- Avoid using harsh chemicals and / or cleaners that are oil or solvent based
- Only clean leather with approved upholstery leather cleaners in accordance with the manufacturer's instructions