

PAMPLONA

PROUDLY EXHIBITING ALL THE NATURAL CHARACTERISTICS OF A PURE ANILINE LEATHER AND A HAND POLISHED SURFACE TO ENHANCE THE GRAIN. DESIGNED TO AGE AND PATINA WITH WEAR.

PAMPLONA COLOURS



BIER 7207



CAMPARI 7405



CASTANO 7204



COAL 7109



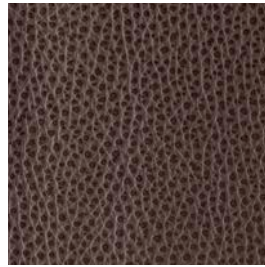
GUINNESS 7202



HENNA 7407



MOROCCAN 7307



OVERLAND 7704



PRALINE 7309

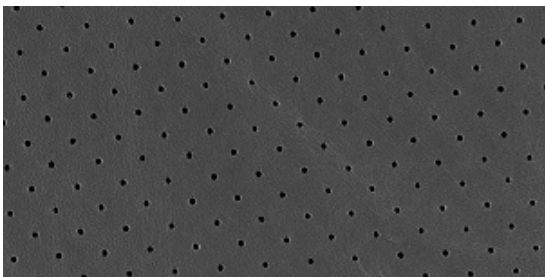


TABASCO 7409



TUSCAN 7305

PAMPLONA PERFORATION OPTIONS



PINPOINT

PAMPLONA DETAILS

PRONOUNCED GRAIN, ANILINE

Pamplona proudly exhibits all of the natural characteristics of a pure aniline leather. These are openly on display in the form of growth marks, fat wrinkles, etc. The pronounced surface grain is as a result of the leather being hand polished. This makes Pamplona one of the most unusual ranges in the Pelle Leathers Collection. Age and wear will only enhance this luxurious leather.

APPLICATIONS	Upholstery, Wall Panelling, Curtain
HIDE SIZE (IN SQM)	5.2
THICKNESS (IN MM)	1.4-1.6

CHARACTERISTIC	TEST METHOD	TEST RESULTS
COLOUR FASTNESS TO RUBBING	EN ISO 11640	Dry 3
	EN ISO 11640	Wet 3
FLEXING ENDURANCE	DIN 53351	20000 cycles (no finish damage cracks)
TEAR STRENGTH	DIN 53329A	> 20 N
LIGHT FASTNESS	EN ISO 105-B02	3
FINISH ADHESION	IUF 470	1.5 N/cm
FLAME RESISTANCE	AS/NZS 1530.3	Ignitability 14
		Spread of Flame 0
		Heat Evolved 3
		Smoke Developed 3
	DIN EN 1021:1 and EN 1021:2 BS 5852:1 and BS 5852:2	

ENVIRONMENTAL

- All wastewater is cleaned in a biological treatment plant, recycled and reused. No PCP, Chrome VI, CADMIUM, FORMALDEHYDE or AZO - Col Dyes are used in the tanning process. All dyes and pigments (finishes) are solvent free ie. water based
- State of the art application technology optimizes the finishing process and greatly reduces the rate of airborne emissions
- Regular inspections are conducted to ensure that quality and environmental standards are maintained at all times
- Low VOC product

CARE OF LEATHER

- Do not place leather in direct sunlight
- Ensure a minimum of 80cm between furniture and heating source
- Avoid contact of leather with sharp objects
- Regularly clean and dust your leather with a clean dry cloth
- Remove food spills immediately. Do not scrub hard
- Avoid using harsh chemicals and / or cleaners that are oil or solvent based
- Only clean leather with approved upholstery leather cleaners in accordance with the manufacturer's instructions