



DANUBE

A HEAVY WEIGHT SOFT, SUPPLE PIGMENTED LEATHER WITH MINIMAL SURFACE TREATMENT, SUBSTANTIAL THICKNESS AND WIDE COLOUR RANGE.



pelleleathers.com.au
+ 61 2 9460 9222

DANUBE COLOURS



AEGEAN

8560



ALABASTER

8190



ARANCIO

8630



BALSAMIC

8225



BURGANDY

8410



BRANDY

8240



CACTUS

8750



CANTALOUPE

8851



CENERE

8245



CHROME

8140



COFFEE

8210



FLINT

8170



FRAICHE

8975



GLACIER

8990



HONEYCOMB

8860



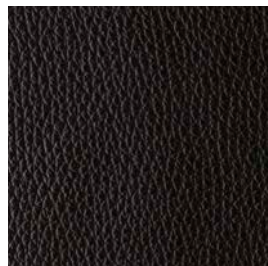
MEDOC

8430



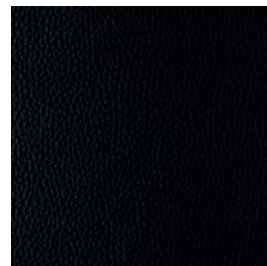
MERMAID

8570



MOSS

8790



NOIRE

8100



NOUGAT

8370



NULLABOR

8260



PECAN

8275



PEWTER

8160



REEF

8565



RUBY

8460



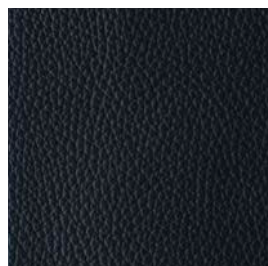
SANGRIA

8490



SETA

8355



SHALE

8120



SHAMROCK

8765



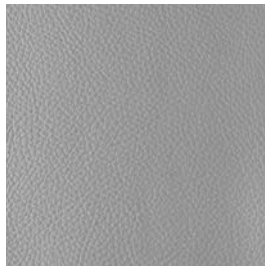
SUNSHINE

8895

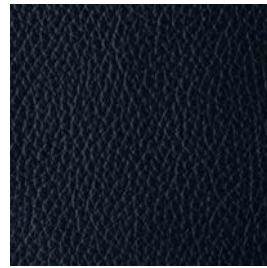
DANUBE COLOURS



SYRUP



TITANIUM



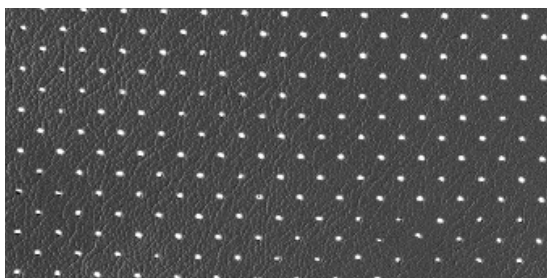
ZAFIRO

8265

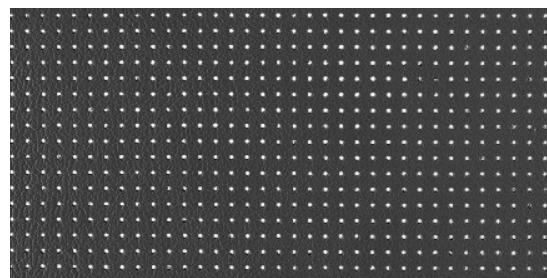
8180

8525

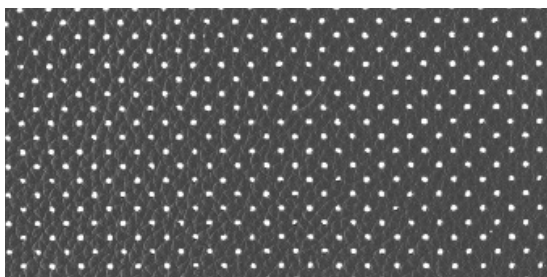
DANUBE PERFORATION OPTIONS



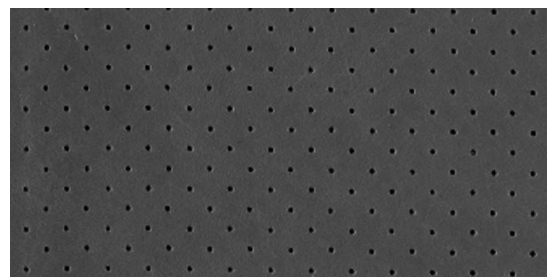
MK 1



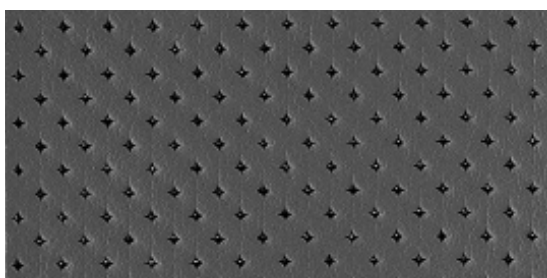
MK 2



MK 3



PINPOINT



DANUBE DETAILS



PRONOUNCED GRAIN, PIGMENTED

Danube is a heavy weight soft, supple pigmented leather with minimal surface treatment, allowing the natural characteristics of leather to be exhibited. It is evenly coloured for high light fastness and durability. The Danube collection has a substantial thickness and is available in a wide range of colours. This leather is suitable for all public seating.

| | |
|--------------------|----------------------------|
| APPLICATIONS | Upholstery, Wall Panelling |
| HIDE SIZE (IN SQM) | 5.5 |
| THICKNESS (IN MM) | 1.4-1.6 |

| CHARACTERISTIC | TEST METHOD | TEST RESULTS |
|----------------------------|-------------------------------------------------------------------------------------|-----------------------------------------------------------------------------|
| COLOUR FASTNESS TO RUBBING | EN ISO 11640 | Dry 4 - 5 |
| | EN ISO 11640 | Wet 4 - 5 |
| FLEXING ENDURANCE | EN ISO 5402 | 50,000 cycles (no finish damage cracks) |
| TEAR STRENGTH | EN ISO 3377-1 | > 20 N |
| LIGHT FASTNESS | EN ISO 105-B02 | 6 |
| FINISH ADHESION | EN ISO 5402/IUF 470 | 2.5 N/cm |
| FLAME RESISTANCE | AS/NZS 1530.3 | Ignitability 13 Spread of Flame 0 Heat Evolved 3 Smoke Developed 5 |
| | AS/NZS 3837 | meets BCA Group 1 |
| | DIN EN 1021:1 and EN 1021:2 BS 5852:1 and BS 5852:2 ISO 8191:1 and ISO 8191:2 | |

ENVIRONMENTAL

- All wastewater is cleaned in a biological treatment plant, recycled and reused. No PCP, Chrome VI, CADMIUM, FORMALDEHYDE or AZO - Col Dyes are used in the tanning process. All dyes and pigments (finishes) are solvent free ie. water based
- State of the art application technology optimizes the finishing process and greatly reduces the rate of airborne emissions
- Regular inspections are conducted to ensure that quality and environmental standards are maintained at all times
- Low VOC product

CARE OF LEATHER

- Do not place leather in direct sunlight
- Ensure a minimum of 80cm between furniture and heating source
- Avoid contact of leather with sharp objects
- Regularly clean and dust your leather with a clean dry cloth
- Remove food spills immediately. Do not scrub hard
- Avoid using harsh chemicals and / or cleaners that are oil or solvent based
- Only clean leather with approved upholstery leather cleaners in accordance with the manufacturer's instructions