



## CONTRACT

CONTRACT LEATHER IS UV AND FIRE RETARDENT TREATED, DIRT RESISTANT AND PROVIDES HIGH LIGHT FASTNESS AND DURABILITY FOR USE IN A WIDE VARIETY OF COMMERCIAL APPLICATIONS.



[pelleleathers.com.au](http://pelleleathers.com.au)  
+ 61 2 9460 9222

## CONTRACT COLOURS



AMSTERDAM 5029



ANKARA 5055



BARCELONA 5027



BERLIN 5042



BLACKPOOL 5021



CAIRO 5028



CASABLANCA 5024



COLOGNE 5039



COPENHAGEN 5033



CORSICA 5054



DOLOMITE 5046



ECUADOR 5053



GENOVA 5047



GLASGOW 5036



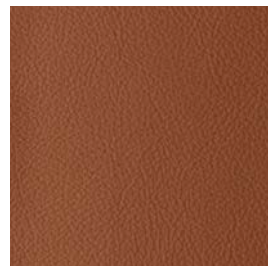
KOBE 5056



LAGOS 5026



LONDON 5048



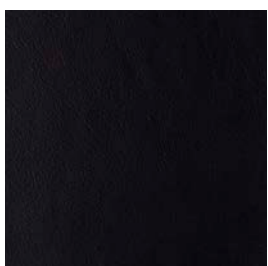
MADRID 5045



MALAGA 5034



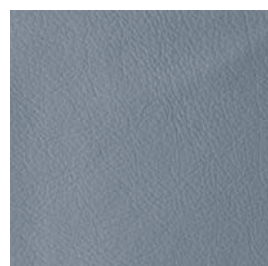
MIAMI 5025



MOSCOW 5040



NAPOLI 5037



OSAKA 5057



OSLO 5023



PARIS 5038



PRAQUE 5020



PROVENCE 5041



RIGA 5030



ROMA 5043



ROTTERDAM 5022

## CONTRACT COLOURS



SANTA FE

5044



SINGAPORE

5049



STOCKHOLM

5032



STUTT GART

5058



SYDNEY

5099



TIFLIS

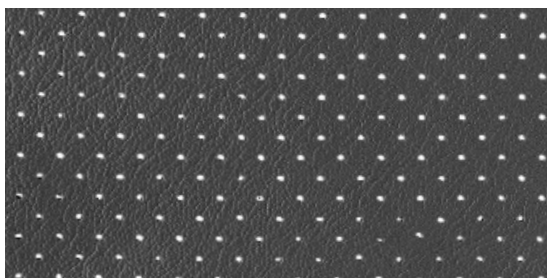
5059



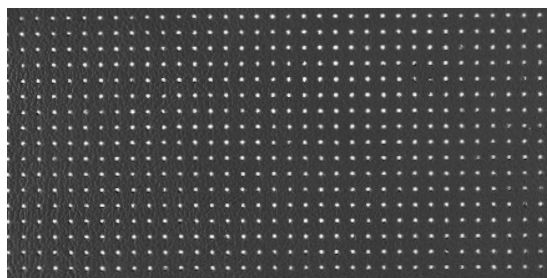
TOKYO

5051

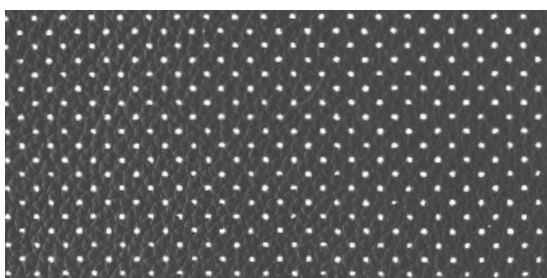
## CONTRACT PERFORATION OPTIONS



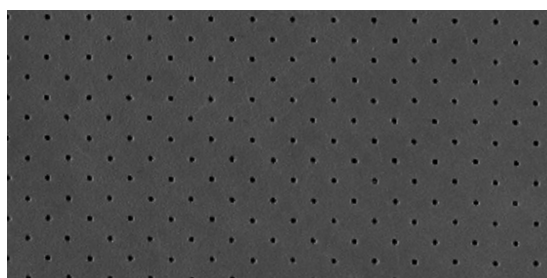
MK 1



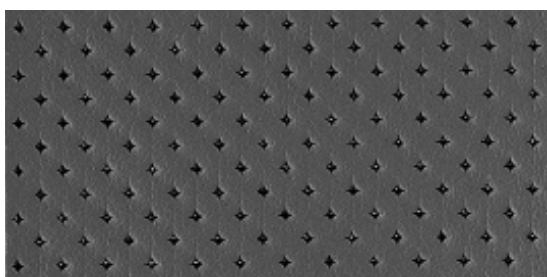
MK 2



MK 3



PINPOINT



PIQUE

## CONTRACT DETAILS

### SUBTLE GRAIN, PIGMENTED

The Contract range is a specifically developed pigmented leather produced with a UV treated, dirt resistant and fire retardant finish, providing high light fastness and durability. Contract can be used in a wide variety of applications including contract upholstery, door covering and wall paneling, railway, aviation, automotive and marine use. The Contract range can also be supplied perforated in all colours.

---

|                    |   |
|--------------------|---|
| APPLICATIONS       | Upholstery, Wall Panelling, Aviation, Railway, Marine |
| HIDE SIZE (IN SQM) | 5.5   |
| THICKNESS (IN MM)  | 1.0-1.2   |

| CHARACTERISTIC             | TEST METHOD  | TEST RESULTS  |
|----------------------------|--|---|
| COLOUR FASTNESS TO RUBBING | EN ISO 11640   | Dry 4 - 5   |
|                            | EN ISO 11640   | Wet 4 - 5   |
| FLEXING ENDURANCE          | DIN 53351  | 50,000 flexes<br>(no finish damage cracks)                                  |
| TEAR STRENGTH              | ISO 3377-1   | >20N  |
| LIGHT FASTNESS             | EN ISO 105-B02   | 6   |
| FINISH ADHESION            | EN ISO 5402/IUF 470  | 3.5 N/cm  |
| FLAME RESISTANCE           | AS/NZS 1530.3  | Ignitability 15<br>Spread of Flame 0<br>Heat Evolved 1<br>Smoke Developed 5 |
|                            | AS/NZS 3837  | meets BCA Group 1   |
|                            | DIN EN 1021:1 and EN 1021:2<br>BS 5852:1 and BS 5852:2<br>ISO 8191:1 and ISO 8191:2<br>IMO A.652 |   |

#### ENVIRONMENTAL

- All wastewater is cleaned in a biological treatment plant, recycled and reused. No PCP, Chrome VI, CADMIUM, FORMALDEHYDE or AZO - Col Dyes are used in the tanning process. All dyes and pigments (finishes) are solvent free ie. water based
- State of the art application technology optimizes the finishing process and greatly reduces the rate of airborne emissions
- Regular inspections are conducted to ensure that quality and environmental standards are maintained at all times
- Low VOC product

#### CARE OF LEATHER

- Do not place leather in direct sunlight
- Ensure a minimum of 80cm between furniture and heating source
- Avoid contact of leather with sharp objects
- Regularly clean and dust your leather with a clean dry cloth
- Remove food spills immediately. Do not scrub hard
- Avoid using harsh chemicals and / or cleaners that are oil or solvent based
- Only clean leather with approved upholstery leather cleaners in accordance with the manufacturer's instructions