



## ASCONA

A PURE ITALIAN ANILINE LEATHER WITH A CONTEMPORARY SMOOTH AND RUSTIC APPEARANCE. DESIGNED TO PATINA WITH AGE AND WEAR.



**pelleleathers**

[pelleleathers.com.au](http://pelleleathers.com.au)  
+ 61 2 9460 9222

## ASCONA COLOURS



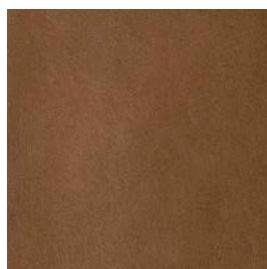
KIWI

9051



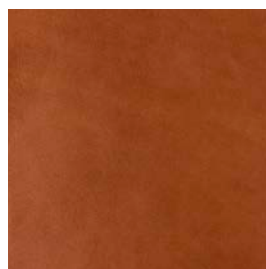
BISCOTTI

9047



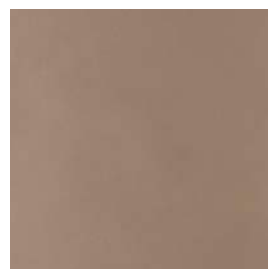
PYRENEES

9079



TOBACCO

9049



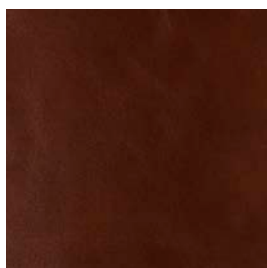
CARIBOU

9086



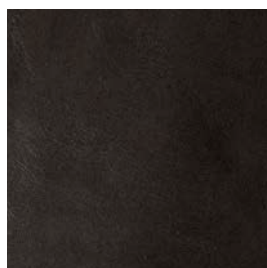
CHERRY

9046



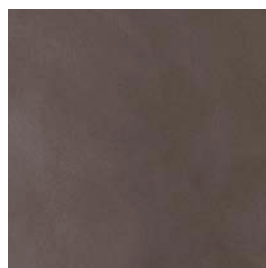
DREAMTIME

9084



TAPAS

9033



PILBARA

9063



IVORY

9078



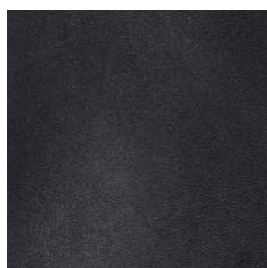
DRY LEAF

9166



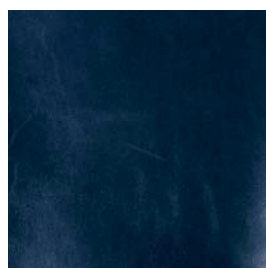
HURRICANE

9085



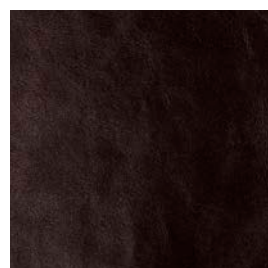
ROGUE

9088



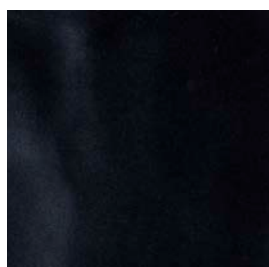
ZANZIBAR

9452



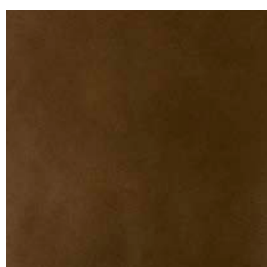
ESPRESSO

9055



EBONY

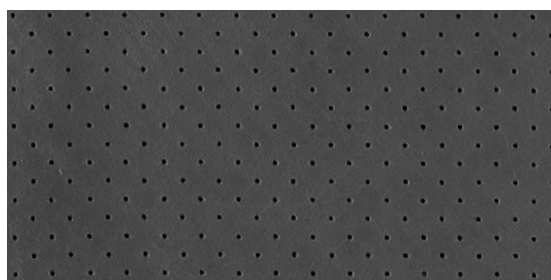
9032



CORDA

9199

## ASCONA PERFORATION OPTIONS



PINPOINT

# ASCONA DETAILS

## SMOOTH GRAIN, ANILINE

Ascona is a pure Italian aniline leather with a contemporary rustic appearance. It has been vacuum dried to give a smooth, aged effect with a slight sheen. This appearance is enhanced with age and wear to exhibit a beautiful patina.

---

APPLICATIONS	Upholstery, Wall Panelling, Curtain
HIDE SIZE (IN SQM)	5.0
THICKNESS (IN MM)	1.0-1.2

---

CHARACTERISTIC	TEST METHOD	TEST RESULTS	
COLOUR FASTNESS TO RUBBING	EN ISO 11640	Dry $\geq 3$	
	EN ISO 11640	Wet $\geq 3$	
	EN ISO 11641	Perspiration $\geq 3$	
TEAR STRENGTH	I.U.P /8	$\geq 20$ N	
COLOURFASTNESS TO LIGHT	EN ISO 105-B02	$\geq 3$	
pH	EN ISO 4045	$\geq 3.2$	
FLAME RESISTANCE	AS/NZS 1530.3	Ignitability	13
		Spread of Flame	0
		Heat Evolved	3
		Smoke Developed	4
	AS/NZS 3837	meets BCA Group 1	
	DIN EN 1021:1 and EN 1021:2 BS 5852:1		

---

### ENVIRONMENTAL

- All wastewater is cleaned in a biological treatment plant, recycled and reused. No PCP, Chrome VI, CADMIUM, FORMALDEHYDE or AZO - Col Dyes are used in the tanning process. All dyes and pigments (finishes) are solvent free ie. water based
- State of the art application technology optimizes the finishing process and greatly reduces the rate of airborne emissions
- Regular inspections are conducted to ensure that quality and environmental standards are maintained at all times
- Low VOC product

---

### CARE OF LEATHER

- Do not place leather in direct sunlight
- Ensure a minimum of 80cm between furniture and heating source
- Avoid contact of leather with sharp objects
- Regularly clean and dust your leather with a clean dry cloth
- Remove food spills immediately. Do not scrub hard
- Avoid using harsh chemicals and / or cleaners that are oil or solvent based
- Only clean leather with approved upholstery leather cleaners in accordance with the manufacturer's instructions