



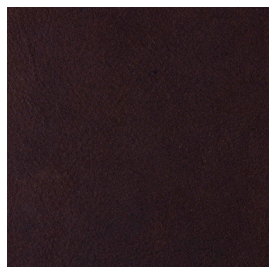
TANZANIA

A TRUE ANILINE LEATHER, A SOFT WAXY FINISH GIVES A RAW MATT APPEARANCE WITH A TOUCH OF UNDERSTATED ELEGANCE AND SUPERB TACTILE HAND.



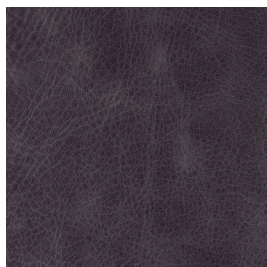
pelleleathers.com.au
+ 61 2 9460 9222

TANZANIA COLOURS



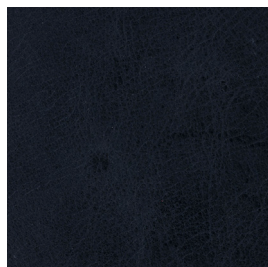
BAYOU

889805



CASSOWARY

876606



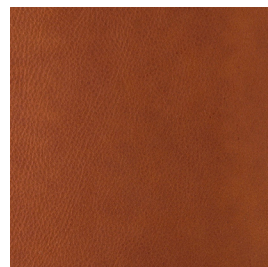
HIPPO

877805



HYENA

886605



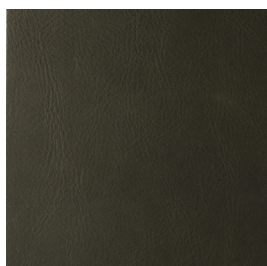
IMPALA

885505



LIONESS

883205



MYRTLE

887701



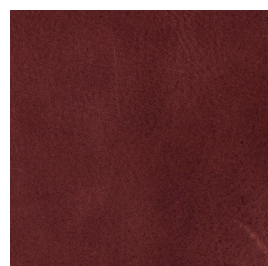
PLAIT

887702



PEACOCK

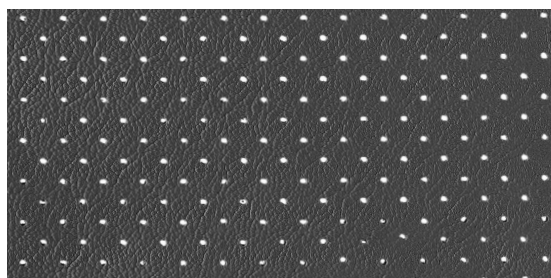
867705



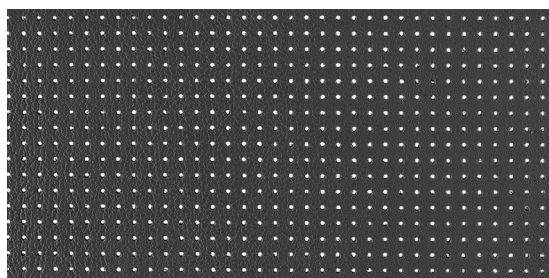
WILDERBEEST

837805

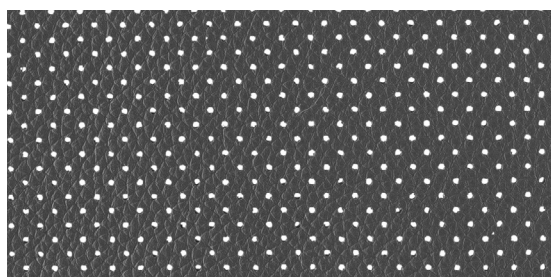
TANZANIA PERFORATION OPTIONS



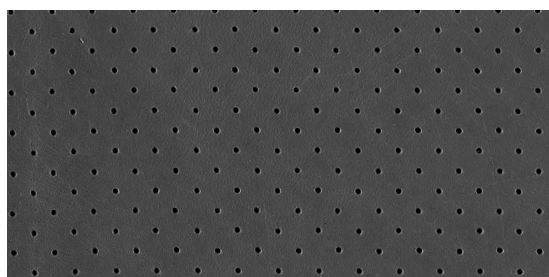
MK1



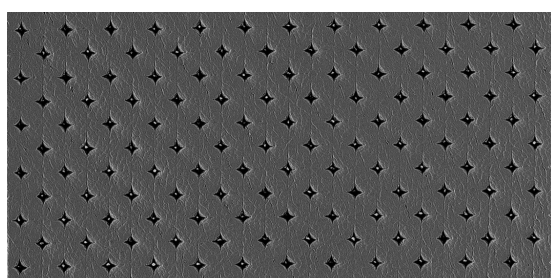
MK2



MK3



PINPOINT



PIQUE

TANZANIA DETAILS

SUBTLE GRAIN, ANILINE

Tanzania is a pure Aniline leather produced from the highest-grade South German raw hides. Displaying all the natural hallmarks of a true aniline leather, the soft waxy finish gives a raw matt appearance with a touch of understated elegance and superb tactile hand. Added appeal are the subtle, natural markings such as growth marks and fat wrinkles, which bring unique characteristics to each hide.

APPLICATIONS	Upholstery, Wall Panelling, Curtain
HIDE SIZE (IN SQM)	5.6
THICKNESS (IN MM)	1.4-1.6

CHARACTERISTIC	TEST METHOD	TEST RESULTS	
COLOUR FASTNESS TO RUBBING	EN ISO 11640	Dry	3-4
	EN ISO 11640	Wet	3-4
TEAR STRENGTH	Uni EN ISO 3377-1	> 20 N	
LIGHT FASTNESS	EN ISO 105-B02	3	
FLAME RESISTANCE	AS/NZS 1530.3	Ignitability	15
		Spread of Flame	0
		Heat Evolved	3
	Smoke Developed	3	
	AS/NZS 3837	meets BCA Group 1	
	DIN EN 1021:1 and EN 1021:2		

ENVIRONMENTAL

- All wastewater is cleaned in a biological treatment plant, recycled and reused. No PCP, Chrome VI, CADMIUM, FORMALDEHYDE or AZO – Col Dyes are used in the tanning process. All dyes and pigments (finishes) are solvent free ie. water based
- State of the art application technology optimizes the finishing process and greatly reduces the rate of airborne emissions
- Regular inspections are conducted to ensure that quality and environmental standards are maintained at all times
- Low VOC product

CARE OF LEATHER

- Do not place leather in direct sunlight
- Ensure a minimum of 80cm between furniture and heating source
- Avoid contact of leather with sharp objects
- Regularly clean and dust your leather with a clean dry cloth
- Remove food spills immediately. Do not scrub hard
- Avoid using harsh chemicals and / or cleaners that are oil or solvent based
- Only clean leather with approved upholstery leather cleaners in accordance with the manufacturer's instructions