



OUTBACK

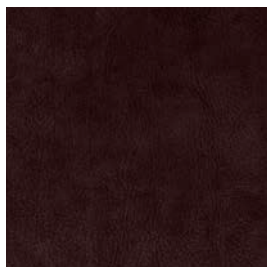
A GERMAN NUBUCK LEATHER RANGE IN A SELECTION OF NATURAL EARTH TONES. EXHIBITING A SOFT AND VELVETY, SUEDE LIKE HANDLE WITH A CLASSIC AND LUXURIOUS APPEARANCE.

OUTBACK COLOURS



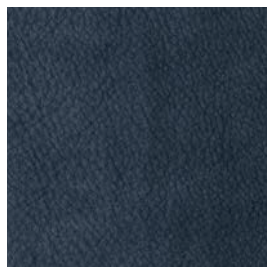
ARABIAN

7390



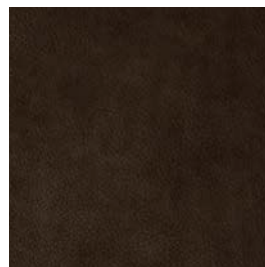
ARNHEM

7240



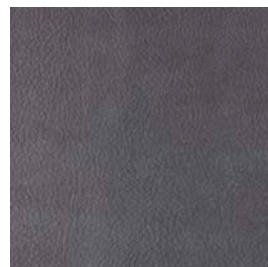
BILBY

7540



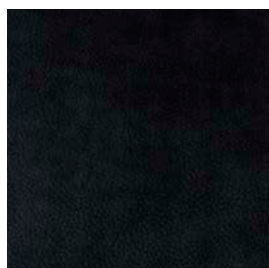
BILLABONG

7330



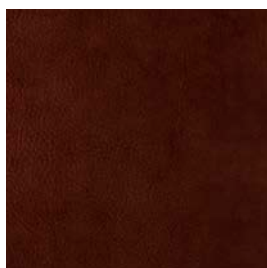
BROLGA

7370



CORROBOREE

7100



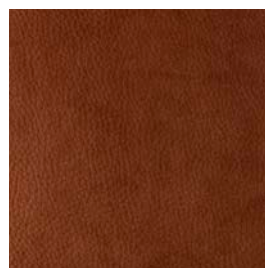
KAKADU

7310



KALAHARI

7350



SAHARA

7280



SPINIFEX

7320



WARATAH

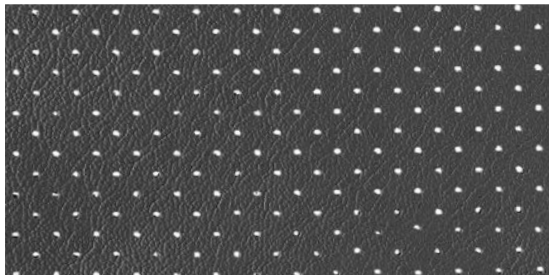
7321



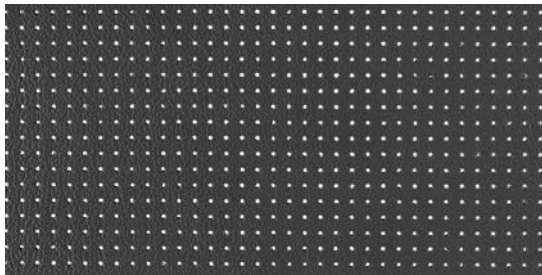
WOOMERA

7220

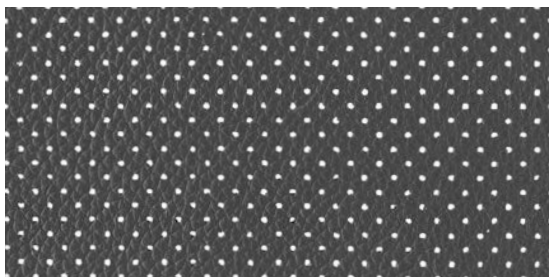
OUTBACK PERFORATION OPTIONS



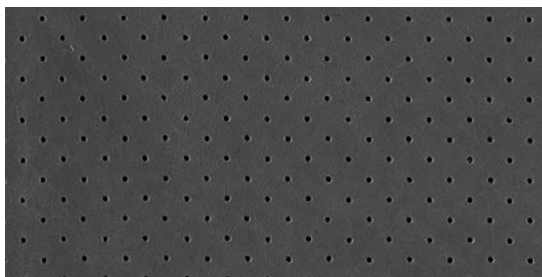
MK1



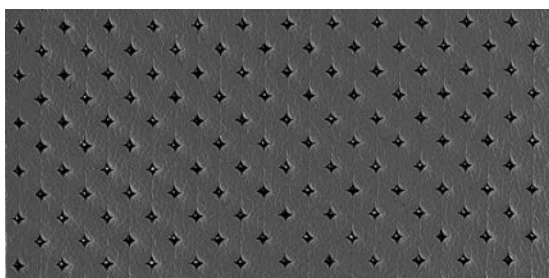
MK2



MK3



PINPOINT



PIQUE

OUTBACK DETAILS

SUBTLE GRAIN, NUBUCK

Outback is a German Nubuck leather in a range of 11 natural earth tones. It's soft, velvety suede like hand gives the leather a classic, luxurious appearance. Outback has had a protective agent applied during the tanning process to resist spillages and staining, making it suitable for both residential and commercial applications.

| | |
|--------------------|-------------------------------------|
| APPLICATIONS | Upholstery, Wall Panelling, Curtain |
| HIDE SIZE (IN SQM) | 5.6 |
| THICKNESS (IN MM) | 1.4-1.6 |

| CHARACTERISTIC | TEST METHOD | TEST RESULTS |
|----------------------------|-----------------------------|-------------------|
| COLOUR FASTNESS TO RUBBING | EN ISO 11640 | Dry 3 |
| | EN ISO 11640 | Wet 3 |
| | EN ISO 11641 | Perspiration 3 |
| TEAR STRENGTH | EN ISO 3377-1 | ≥ 20 N |
| LIGHT FASTNESS | EN ISO 105-B02 | 3 - 4 |
| FINISH ADHESION | EN ISO 5402/IUF 470 | 2.5 N/cm |
| FLAME RESISTANCE | AS/NZS 1530.3 | Ignitability 12 |
| | | Spread of Flame 0 |
| | | Heat Evolved 4 |
| | | Smoke Developed 6 |
| | AS/NZS 3837 | meets BCA Group 1 |
| | DIN EN 1021:1 and EN 1021:2 | |

| ENVIRONMENTAL | CARE OF LEATHER |
|---|--|
| <ul style="list-style-type: none">• All wastewater is cleaned in a biological treatment plant, recycled and reused. No PCP, Chrome VI, CADMIUM, FORMALDEHYDE or AZO – Col Dyes are used in the tanning process. All dyes and pigments (finishes) are solvent free ie. water based• State of the art application technology optimizes the finishing process and greatly reduces the rate of airborne emissions• Regular inspections are conducted to ensure that quality and environmental standards are maintained at all times• Low VOC product | <ul style="list-style-type: none">• Do not place leather in direct sunlight• Ensure a minimum of 80cm between furniture and heating source• Avoid contact of leather with sharp objects• Regularly clean and dust your leather with a clean dry cloth• Remove food spills immediately. Do not scrub hard• Avoid using harsh chemicals and / or cleaners that are oil or solvent based• Only clean leather with approved upholstery leather cleaners in accordance with the manufacturer's instructions |