



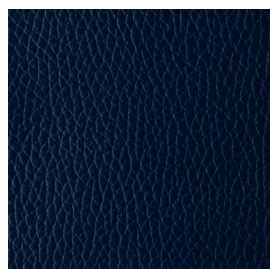
DANUBE

A HEAVY WEIGHT SOFT, SUPPLE PIGMENTED LEATHER WITH MINIMAL SURFACE TREATMENT, SUBSTANTIAL THICKNESS AND WIDE COLOUR RANGE.



pelleleathers.com.au
+ 61 2 9460 9222

DANUBE COLOURS



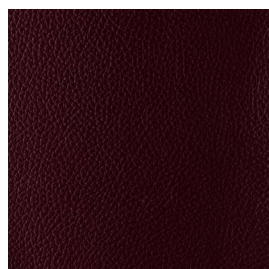
AEGEAN 8560



BALSAMIC 8225



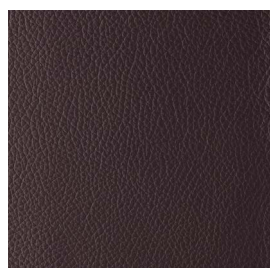
BURGUNDY 8410



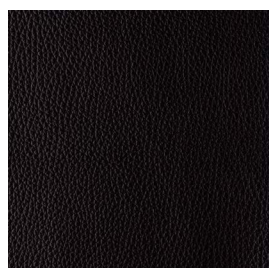
BRANDY 8240



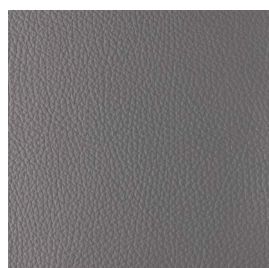
CHROME 8140



CLARET 8711



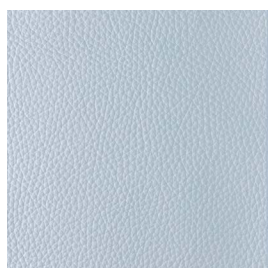
COFFEE 8210



FLINT 8170



FRAICHE 8975



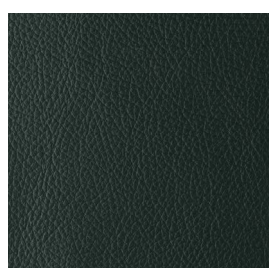
GLACIER 8990



LICHEN 8713



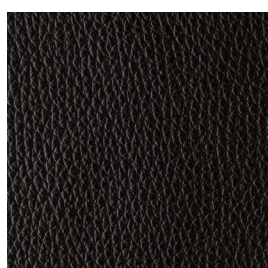
LAKE 8714



MEADOW 8712



MEDOC 8430



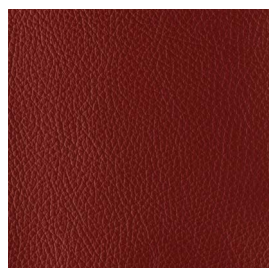
MOSS 8790



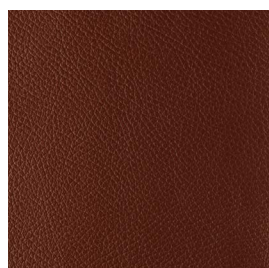
NOIRE 8100



NOUGAT 8370



NULLABOR 8260



PECAN 8275



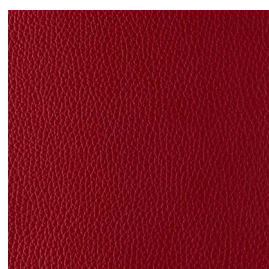
PEWTER 8160



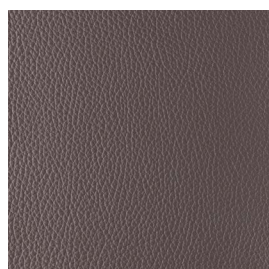
POLLEN 8716



RUBY 8460



SANGRIA 8490



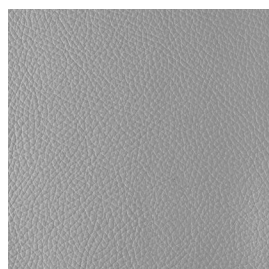
SETA 8355



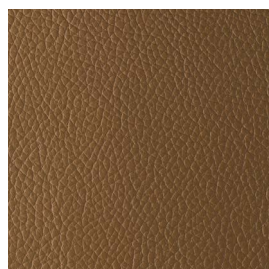
SHALE 8120



SYRUP 8265



TITANIUM 8180

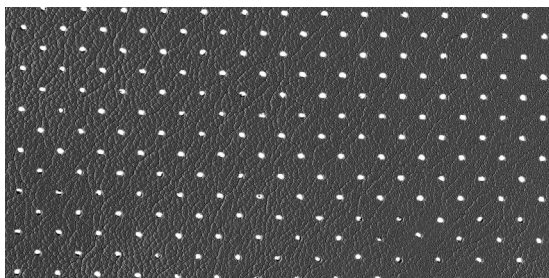


TWINE 8715

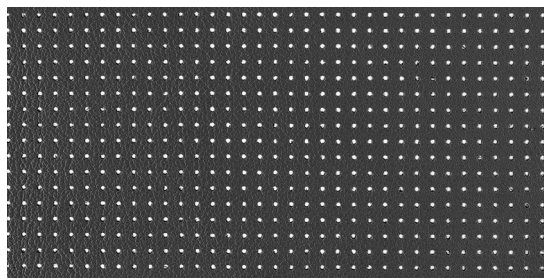


ZAFIRO 8525

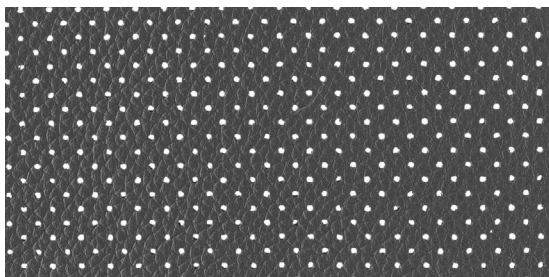
DANUBE PERFORATION OPTIONS



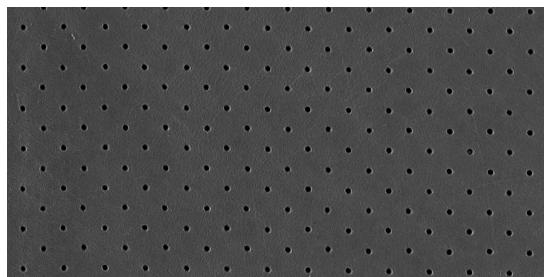
MK1



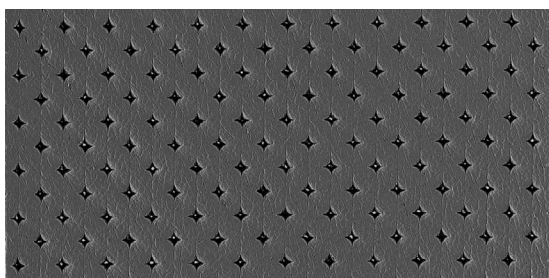
MK2



MK3



PINPOINT



PIQUE

DANUBE DETAILS



PRONOUNCED GRAIN, PIGMENTED

Danube is a heavy weight soft, supple pigmented leather with minimal surface treatment, allowing the natural characteristics of leather to be exhibited. It is evenly coloured for high light fastness and durability. The Danube collection has a substantial thickness and is available in a wide range of colours. This leather is suitable for all public seating.

| | |
|--------------------|----------------------------|
| APPLICATIONS | Upholstery, Wall Panelling |
| HIDE SIZE (IN SQM) | 5.5 |
| THICKNESS (IN MM) | 1.4-1.6 |

| CHARACTERISTIC | TEST METHOD | TEST RESULTS | |
|----------------------------|---|--|-------|
| COLOUR FASTNESS TO RUBBING | EN ISO 11640 | Dry | 4 - 5 |
| | EN ISO 11640 | Wet | 4 - 5 |
| FLEXING ENDURANCE | EN ISO 5402 | 50,000 cycles (no finish damage cracks) | |
| TEAR STRENGTH | EN ISO 3377-1 | > 20 N | |
| LIGHT FASTNESS | EN ISO 105-B02 | 6 | |
| FINISH ADHESION | EN ISO 5402/IUF 470 | 2.5 N/cm | |
| FLAME RESISTANCE | AS/NZS 1530.3 | Ignitability | 13 |
| | | Spread of Flame | 0 |
| | | Heat Evolved | 3 |
| | | Smoke Developed | 5 |
| | AS/NZS 3837 | meets BCA Group 1 | |
| | DIN EN 1021:1 and EN 1021:2 BS 5852:1 and BS 5852:2 ISO 8191:1 and ISO 8191:2 | | |

ENVIRONMENTAL

- All wastewater is cleaned in a biological treatment plant, recycled and reused. No PCP, Chrome VI, CADMIUM, FORMALDEHYDE or AZO – Col Dyes are used in the tanning process. All dyes and pigments (finishes) are solvent free ie. water based
- State of the art application technology optimizes the finishing process and greatly reduces the rate of airborne emissions
- Regular inspections are conducted to ensure that quality and environmental standards are maintained at all times
- Low VOC product

CARE OF LEATHER

- Do not place leather in direct sunlight
- Ensure a minimum of 80cm between furniture and heating source
- Avoid contact of leather with sharp objects
- Regularly clean and dust your leather with a clean dry cloth
- Remove food spills immediately. Do not scrub hard
- Avoid using harsh chemicals and / or cleaners that are oil or solvent based
- Only clean leather with approved upholstery leather cleaners in accordance with the manufacturer's instructions